



MAYOR AND CITY COUNCIL COMPENSATION TASK FORCE

DATE: Wednesday, May 21, 2025
TIME: 4:00 PM
PLACE: City Hall, Conference Room A
50 W. 13th Street, Dubuque, Iowa

Notice is hereby given that the above identified governmental body will meet at the time, date and place as set forth above. The agenda for the meeting is as follows:

- A. CALL TO ORDER**
- B. ROLL CALL AND INTRODUCTIONS**
- C. STAFF REPORTS**
 - 1) Summary of Legal Parameters for Adjusting Mayor and City Council Compensation**
 - 2) Overview of Mayor and City Council Responsibilities and Compensation**
 - 3) Consumer Price Index (CPI) Data**
- D. ACTION ITEMS**
 - 1) Discuss Recommendations for Mayor and City Council Compensation**

E. ADJOURNMENT

This notice is given pursuant to Chapter 21, Code of Iowa and applicable local regulations of the City of Dubuque and/or the governmental body holding the meeting. If you have any questions or comments concerning this notice, please contact the City Clerk's Office, City Hall, 50 W. 13th Street, Dubuque, IA 52001, (563) 589-4100. Individuals requiring special assistance should contact the City Clerk's Office 48 hours

prior to the meeting. Deaf or hard-of-hearing individuals can use Relay Iowa by dialing 711 or (800) 735-2942.

than population head counts, except as required by the Constitution and the laws of the United States.

8. By ordinance, the council shall prescribe the compensation of the mayor, council members, and other elected city officers, but a change in the compensation of the mayor does not become effective during the term in which the change is adopted, and the council shall not adopt an ordinance changing the compensation of the mayor, council members, or other elected officers during the months of November and December in the year of a regular city election. A change in the compensation of council members becomes effective for all council members at the beginning of the term of the council members elected at the election next following the change in compensation. Except as provided in section 362.5, an elected city officer is not entitled to receive any other compensation for any other city office or city employment during that officer's tenure in office, but may be reimbursed for actual expenses incurred. However, if the mayor pro tem performs the duties of the mayor during the mayor's absence or disability for a continuous period of fifteen days or more, the mayor pro tem may be paid for that period the compensation determined by the council, based upon the mayor pro tem's performance of the mayor's duties and upon the compensation of the mayor.

9. A council member, during the term for which that member is elected, is not eligible for appointment to any city office if the office has been created or the compensation of the office has been increased during the term for which that member is elected. A person who resigns from an elective office is not eligible for appointment to the same office during the time for which that person was elected if during that time, the compensation of the office has been increased.

10. A council member, during the term for which that member is elected, is not precluded from holding the office of chief of the volunteer fire department or from serving the volunteer fire department in any other position or capacity. A person holding the office of chief of such a volunteer fire department at the time of the person's election to the city council may continue to hold the office of chief of the fire department during the city council term for which that person was elected.

11. a. Council members shall be elected according to the council representation plans under sections 372.4 and 372.5. However, the council representation plan may be changed, by petition and election, to one of those described in this subsection. Upon receipt of a petition meeting the requirements of section 362.4, requesting a change to a council representation plan, the council shall submit the question at a special election. If a majority of the persons voting at the special election approves the changed plan, it becomes effective at the beginning of the term following the next regular city election. If a majority does not approve the changed plan, the council shall not submit another proposal to change a plan to the voters within the next two years.

b. Eligible electors of a city may petition for one of the following council representation plans:

- (1) Election at large without ward residence requirements for the members.
- (2) Election at large but with equal-population ward residence requirements for the members.
- (3) Election from single-member, equal-population wards, in which the electors of each ward shall elect one member who must reside in that ward.
- (4) Election of a specified number of members at large and a specified number of members from single-member, equal-population wards.

1. [R60, §1081, 1093; C73, §511, 522; C97, §668; S13, §668; C24, 27, 31, 35, 39, §5663; C46, 50, §363.36; C54, 58, 62, 66, 71, 73, §368A.1(2); C75, 77, 79, 81, §372.13(1)]

2. [R60, §1101; C73, §514, 524; C97, §668; S13, §668; C24, 27, 31, 35, 39, §5663; C46, 50, §363.36; C54, 58, 62, 66, 71, 73, §368A.1(8); C75, 77, 79, 81, §372.13(2); 81 Acts, ch 34, §46]

3. [R60, §1082, 1093; C73, §512, 522; C97, §651, 659, 940; S13, §651; SS15, §1056-a26, 1056-b18; C24, 27, 31, 35, 39, §5633, 5640, 5663, 6528, 6651, 6703; C46, 50, §363.11, 363.19, 363.36, 416.52, 419.37, 420.13; C54, 58, 62, 66, 71, 73, §368A.1(1), 368A.3; C75, 77, 79, 81, §372.13(3)]

4. [R60, §1086, 1093, 1095, 1098, 1103, 1105, 1134; C73, §493, 515, 522, 524, 528, 532, 534; C97, §651, 657, 668, 676; S13, §651, 657, 668, 1056-a27, 1056-a28; SS15, §1056-a26, 1056-b14,

CITY GOVERNMENT 101

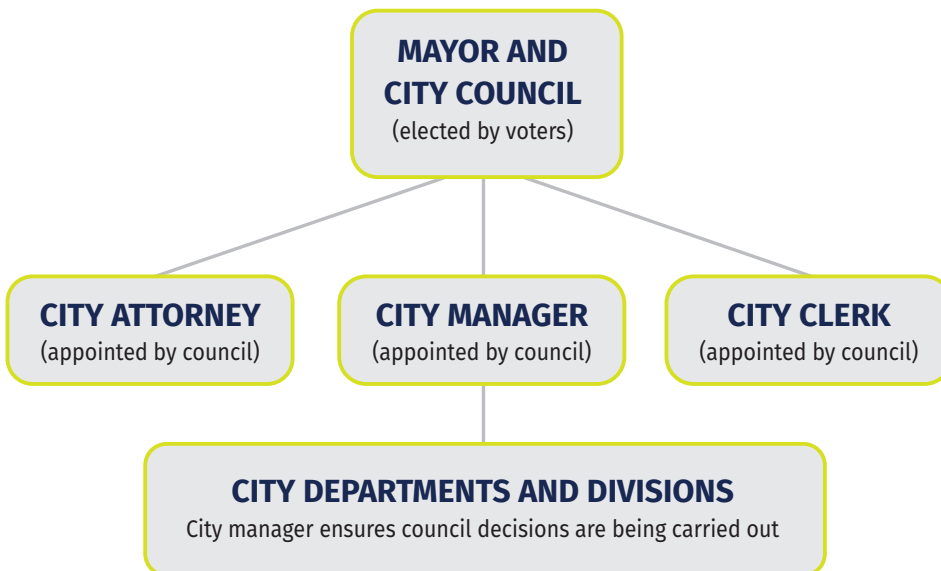
A DUBUQUE RESIDENT'S GUIDE TO CITY GOVERNMENT

FORM OF GOVERNMENT

Dubuque operates under the council-manager form of local government, which combines the political leadership of elected officials in the form of a city council, with the managerial experience of an appointed local government manager, the city manager (Mike Van Milligen, ctymgr@cityofdubuque.org, 563-589-4110.) The council-manager form of government was adopted by citizen referendum in 1920.

Mayor Brad Cavanagh and the Dubuque City Council members are the leaders and policy makers elected to represent the community and to concentrate on policy issues that are responsive to citizens' needs and wishes. The city manager is appointed by the city council to carry out policy. The city council also appoints the city attorney (Crenna Brumwell, cbrumwel@cityofdubuque.org, 563-589-4113) and city clerk (Adrienne Breitfelder, abreitfe@cityofdubuque.org, 563-589-4100.)

The council is the legislative body; its members are the community's decision makers. Power is centralized in the elected council, which approves the budget and determines the city portion of the tax rate, for example. The council also focuses on the community's goals, major projects, and such long-term considerations as community growth, land use development, capital improvement plans, capital financing, and strategic planning. The council hires a professional manager to carry out the administrative responsibilities and supervises the manager's performance.



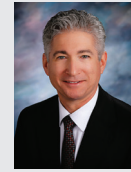
CITY COUNCIL



MAYOR
Brad M. Cavanagh
565 Fenelon Place
Dubuque, Iowa 52001
Phone: (563) 690-6502
bcavanagh@cityofdubuque.org
Term Expires: Dec. 31, 2025



AT-LARGE
Ric W. Jones
1270 Dunleith Court
Dubuque, Iowa 52003
Phone: (563) 690-6503
rjones@cityofdubuque.org
Term Expires: Dec. 31, 2025



AT-LARGE
David T. Resnick
2341 Coventry Park, #207
Dubuque, Iowa 52001
Phone: (563) 690-6504
dresnick@cityofdubuque.org
Term Expires: Dec. 31, 2027



FIRST WARD
Susan R. Farber
1755 Overview Court
Dubuque, Iowa 52003
Phone: (563) 690-6505
sfarber@cityofdubuque.org
Term Expires: Dec. 31, 2025



SECOND WARD
Laura J. Rousell
3224 Bittersweet Lane
Dubuque, Iowa 52001
Phone: (563) 690-6506
lrousell@cityofdubuque.org
Term Expires: Dec. 31, 2027



THIRD WARD
Danny C. Sprank
2473 Jackson Street
Dubuque, Iowa 52001
Phone: (563) 690-6507
dsprank@cityofdubuque.org
Term Expires: Dec. 31, 2025



FOURTH WARD
Katy A. Wethal
560 Fenelon Place
Dubuque, Iowa 52001
Phone: 563.690.6508
kwethal@cityofdubuque.org
Term Expires: Dec. 31, 2027

CITY COUNCIL

The Dubuque City Council consists of seven elected representatives: a mayor and two council members elected at large, and one council member elected from each of Dubuque's four wards. The mayor and other council members serve four-year staggered terms.

City council positions are considered part-time positions. The mayor is a member of the city council and may vote on all matters before the council. Additional information, including city council goals and priorities, biographies, and a city ward map, is available at www.cityofdubuque.org/citycouncil.

The Dubuque City Council meets on the first and third Monday of each month in the Council Chambers on the second floor of the Historic Federal Building at 350 West Sixth Street. The meetings begin at 6:30 p.m. and are broadcast live on CityChannel Dubuque, the local government access channel (Mediacom channel 8 or digital 117.2 and ImOn channel 5). Meetings are also streamed live and archived on the City website at www.cityofdubuque.org/media and on the City's Facebook page. Agendas and minutes from city council meetings are available from the city clerk and on the City website at www.cityofdubuque.org/agendas. Sign up to receive the agendas via email at www.cityofdubuque.org/notifyme.

City council agenda items are due in the city clerk's office in City Hall by noon on the Wednesday preceding the council

meeting. Copies of the agenda are available after 9:00 a.m. on the Friday preceding the meeting at www.cityofdubuque.org/agendas and in the city clerk's office. For more information on city council meetings, call the city clerk's office at 563-589-4100.

Public Input at City Council Meetings

The public can share input with the City Council within the Public Hearings and Public Input sections of City Council meetings in three ways:

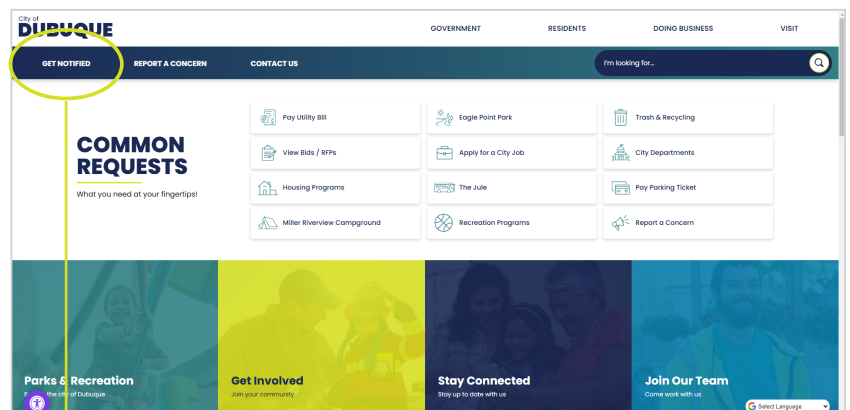
- In-Person: Attend a public meeting and approach the podium when public input is allowed.
- Online: Join the virtual meeting (www.cityofdubuque.org/virtualmeeting) through instructions on the agenda and provide input when prompted.
- Ahead of Time: Submit written communication to City Council members via email, letter, or phone before the meeting.

Please note that live public input is limited to 5 minutes per person and 30 minutes in total at City Council meetings. Members of the public who intend to provide in-person or virtual public input are encouraged to contact the City Clerk (ctyclerk@cityofdubuque.org or 563-589-4100) at least 24 hours prior to the meeting.

PUBLIC MEETINGS

In accordance with the Iowa Public Meetings Law, the City of Dubuque posts public notices of all city council and City board and commission meetings at least 24 hours in advance of each meeting at City Hall. The City's legal notices and notices of public hearing are published in the Legal Notices section of the Telegraph Herald in accordance with state and local code. All these meetings are also listed on the City website and promoted on CityChannel Dubuque.

Interested residents and stakeholders can also subscribe to be notified of meetings by email or text through the Public Meeting Notices Notify Me category on the City's website at www.cityofdubuque.org/notifyme.



Sign up to receive notifications!

be active | be informed

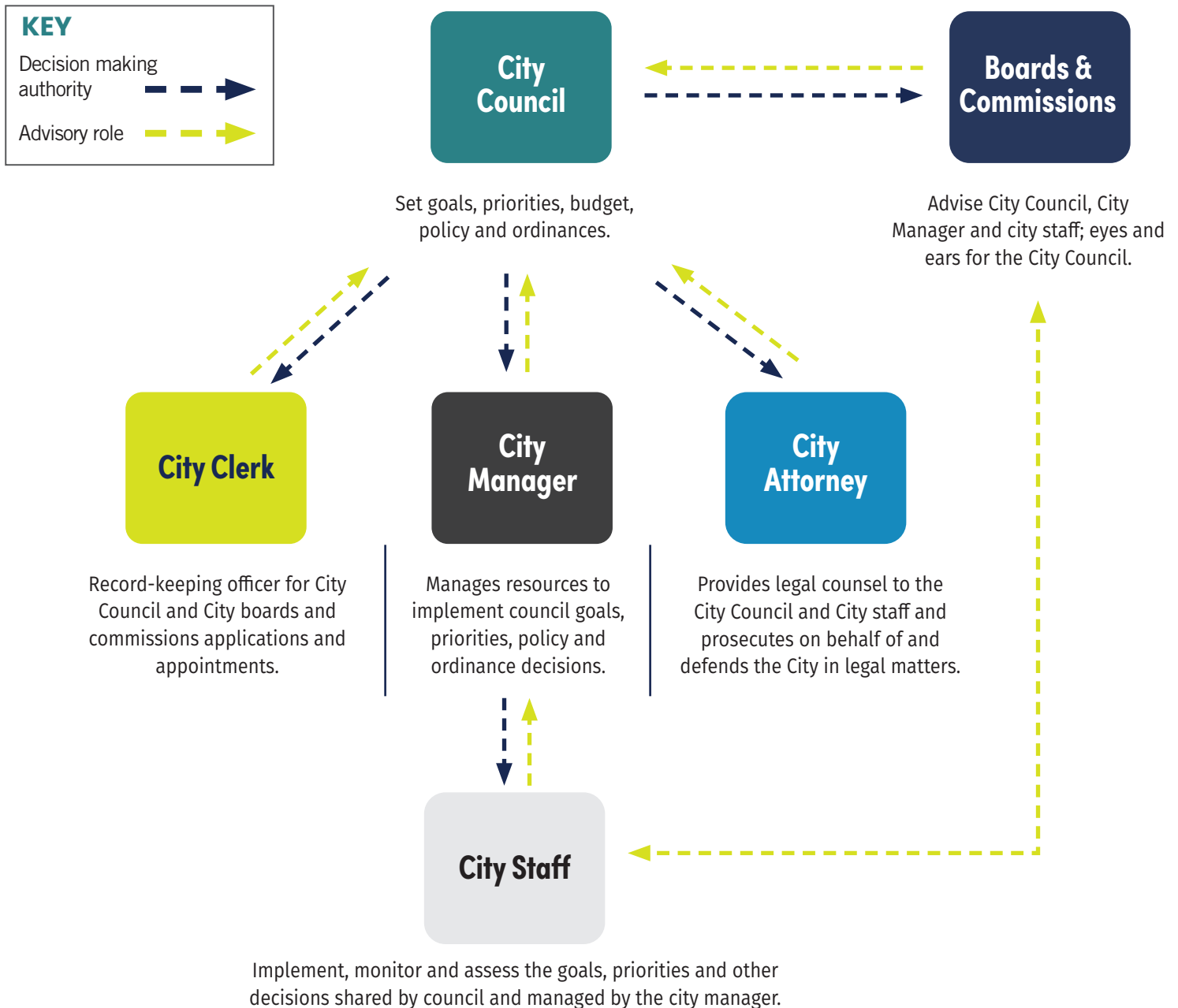
BOARDS & COMMISSIONS

Dubuque's volunteer boards and commissions provide a valuable link to the community and to the various interests present in the city; assist in the development of policy recommendations to the city council; provide leadership and support to City staff; promote the City and its programs; and provide expertise in specialized areas.

To apply, or for more information, visit www.cityofdubuque.org/join or call 563-589-4100.

- Airport Commission
- Airport Zoning Board of Adjustment
- Airport Zoning Commission
- Arts and Cultural Affairs Advisory Commission
- Building Code Advisory and Appeals Board
- Cable TV Commission
- City Board of Review
- Civic Center Commission
- Civil Service Commission
- Community Development Advisory Commission
- Historic Preservation Commission

- Housing Appeals & Mediation Board
- Housing Commission
- Housing Trust Fund Advisory Committee
- Human Rights Commission
- Investment Oversight Commission
- Library Board of Trustees
- Long Range Planning Advisory Commission
- Parks & Recreation Commission
- Resilient Community Advisory Commission
- Transit Advisory Board
- Zoning Advisory Commission
- Zoning Board of Adjustment

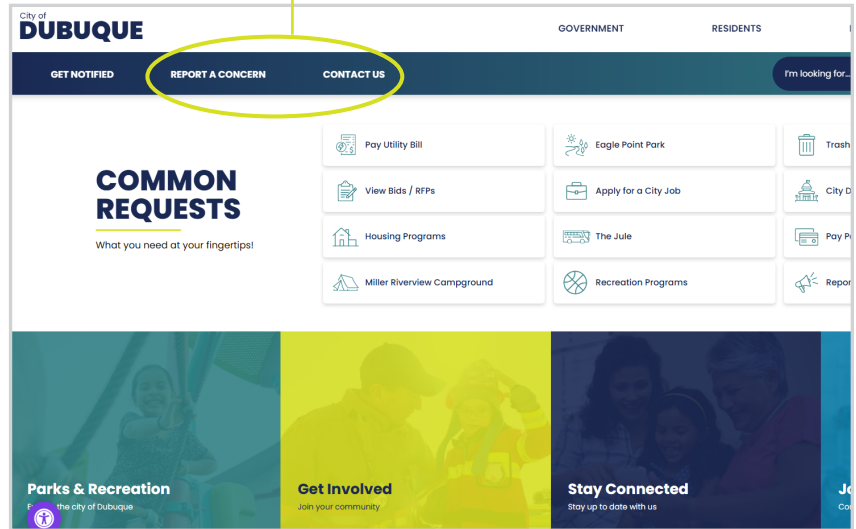


tell us what you think CONNECT WITH THE CITY

Dubuque residents and community stakeholders have numerous options to connect with their city government. They can, of course, contact city council members regarding city policies, city council meeting agenda items, or any other issue related to city government. Individual council members can be contacted directly by phone, email, or letter (information at www.cityofdubuque.org/citycouncil) or as a group through the “Contact Us” link on the City website, www.cityofdubuque.org.

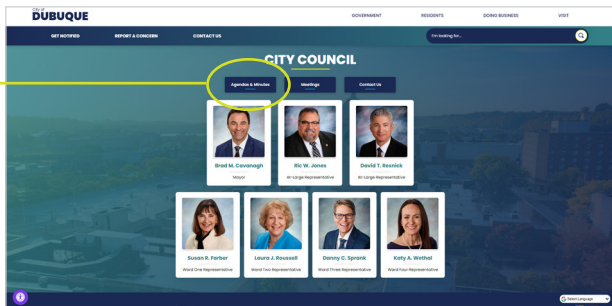
Residents with questions about city policies, services, and programs, are always welcome to visit a city facility or contact the city departments directly. The City website also features a service request module that allows residents to submit requests for a wide variety of city services or provide input and feedback on issues. Access a complete list of service requests at www.cityofdubuque.org/citizensupport.

Report a Concern or Contact Us

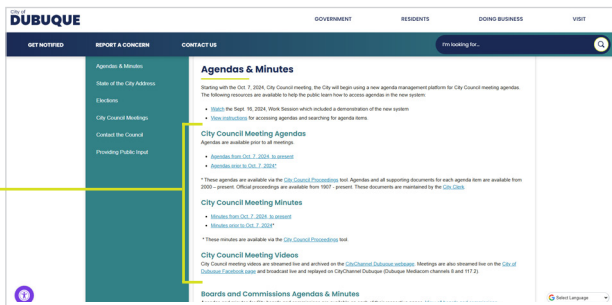


PUBLIC RECORDS & REQUESTS

Click here for Agendas & Minutes



Then Choose



In addition to the Agendas & Minutes quick link, the City website features a “Public Documents” page at www.cityofdubuque.org/documents which provides access to public documents available in three categories:

City Council Agendas & Proceedings, City Code, and City Ordinances - Use this tool to search city council agendas with related documents (2000 - present) and official proceedings (1908 - present), City ordinances, and the City Code online. These documents are maintained by the city clerk.

Document Center - Access public documents including forms, applications, handouts, brochures, and other material from City departments and divisions.

Archive Center - Access agendas and minutes for all City boards and commissions as well as archived documents from City departments and divisions including newsletters, reports, and other publications. Requests for other documents can be facilitated by the public information office, 563.589.4151 or publicinfo@cityofdubuque.org.

QUESTIONS?

For additional information on accessing information or becoming involved in city government, please contact the City of Dubuque Public Information Office at 563-589-4151 or publicinfo@cityofdubuque.org.

**Mayor and City Council Compensation Task Force
2025**

City Council Meeting Tally

Meeting Type	Frequency	2023	2024	2025 (to date as of 5/2/25)
Regular Council Meetings	Twice a month	24	24	8
Special/Work Sessions	As needed	35	39	9
Department Budget Meetings	Annually	7	7	7
Goal Setting Sessions	Annually	3	3	3 Scheduled
Legislative Dinner	Annually	1	1	TBD
Boards and Commissions Picnic	Annually	1	1	1 Scheduled

City Council Annual Conferences and Events

1. National League of Cities Annual Congressional City Conference – Washington, DC
2. National League of Cities Annual Conference
3. Iowa League of Cities Annual Conference
4. Growing Sustainable Communities Conference (Dubuque)
5. Chamber of Commerce / Washington DC Annual Delegation
6. Chamber of Commerce Dubuque Night
7. Legislative Staff visits
8. Travel to State Capital to advocate for legislation
9. U.S. Conference of Mayors (Mayor only)
10. Mississippi River Cities Towns Initiative annual meeting (Mayor only)
11. Ribbon Cuttings
12. Speakers at community events (Most often Mayor or Mayor Pro Tem)
13. Other conference attendance associated with specific board or committee assignments or special invitations to attend. Examples include:
 - a. National Main Street Conference
 - b. United Nations Climate Change Conference (COP28)
 - c. National League of Cities AI Advisory Committee
 - d. Quebec, Canada, Sustainability Forum

Other Duties

City Council Boards and Committee Assignments (see attachment)
Engagement with residents via phone calls, emails, meetings

Mayor and City Council Members Latest Listings

Calendar Year 2025

Conference Board	
Meetings called by City Assessor	
Cavanagh	Length of Term
Sprank	Length of Term
Roussell	Length of Term
Jones	Length of Term
Farber	Length of Term
Resnick	Length of Term
Wethal	Length of Term

Convention & Visitor's Bureau - Travel Dubuque - Board of Directors	
3rd Tuesday of each month at 4:00 pm except July and December	
Cavanagh	1 year term - July to June
Jones	1 year term - July to June

Convention and Visitors Bureau - Travel Dubuque - Outreach Committee	
Meets quarterly	
Wethal	1 year term July to June
Roussell	1 year term July to June

Convention & Visitors Bureau - Travel Dubuque - Sister City Committee	
Meetings called by Travel Dubuque	
Farber	1 year term - August to July

County Resource Enhancement and Protection Act (REAP) Committee	
Annually on the 2nd Tuesday in August at 3:00 p.m.	
Sprank	1 year term - August to July

Dubuque County Early Childhood Board	
4th Wednesday of each month at Noon (Except July and December)	
Wethal	3 year term - Jan 1, 2027

Dubuque Initiatives	
2nd and 4th Monday of each month at Noon	
Cavanagh	For Length of Term
Resnick	For Length of Term
Farber	For Length of Term

Dubuque Main Street Board of Directors	
4th Wednesday of Jan., Feb., March, April, May, June, Sept. and Oct. and the 1st Wednesday of Aug. and Dec. at 8:00 a.m.	
Roussell	1 year term Jan. to Dec.

Dubuque Main Street Executive Committee	
3rd Thursday of each month at 11:30 am	
Roussell	1 year term Jan. to Dec.

Dubuque Metropolitan Area Solid Waste Agency Board	
3rd Wednesday of each month at Noon	
Jones	For Length of Term
Resnick	For Length of Term

Dubuque Metropolitan Area Transportation Study (DMATS) Policy Committee	
2nd Thursday of each month at Noon	
Cavanagh	For Length of Term
Sprank	For Length of Term
Roussell	For Length of Term
Jones	For Length of Term
Farber	For Length of Term
Resnick	For Length of Term
Wethal	For Length of Term

Dubuque Metropolitan Area Transportation Study (DMATS) Technical Advisory Committee	
2nd Thursday of each month at 10:30	
Cavanagh	For Length of Term

Dubuque Racing Association - Board of Directors	
4th Tuesday of each month at Noon	
Cavanagh	1 year term - May 1 to April 30
Jones	1 year term - May 1 to April 30
Sprank	1 year term - May 1 to April 30

Four Mounds Foundation Board of Trustees	
3rd Monday of each month	
Resnick	1 year term - Jan. to Dec. with no limitations

Friends of the Mines of Spain Advisory Board	
No Less than one time a year. On average meets quarterly.	
Wethal	1 year term - Jan. to Dec.

Greater Dubuque Development Corp. (GDCC) Board of Directors	
4th Tuesday (March, June, Sept., Dec.) at 8:30 a.m.	
Cavanagh	1 year term - July to June
Sprank	1 year term - July to June
Roussell	1 year term - July to June

Greater Dubuque Development Corp. (GDCC) Executive Committee	
4th Tuesday of each month at 8:30 a.m. (March, June, Sept. and Dec. are in conjunction with Board of Directors)	
Cavanagh	Virtue of Position

Pre-Disaster Mitigation Plan Committee (PDMP)	
Meets once every 5 years to update the PDMP and review appointments	
Sprank	5 year term - January 2029
Jones	5 year term - January 2029

River Valley Initiative Foundation Board of Directors	
Meets quarterly 7:30 AM	
Sprank	3 year term - January 2025

**CITY OF DUBUQUE MAYOR AND CITY COUNCIL ANNUAL SALARY HISTORY
Listed by Effective Date**

Prior to January 1, 1994

Mayor - \$9,125

Council Members - \$6,083

January 1, 1994

Mayor - \$9,399

Council Members - \$6,265

January 1, 1995

Mayor - \$9,681

Council Members - \$6,453

January 1, 1996

Mayor - \$10,068

Council Members - \$6,711

January 1, 1997

Mayor - \$10,471

Council Members - \$6,979

January 1, 2002

Mayor - \$11,000

Council Members - \$8,000

January 1, 2006

Mayor - \$11,500

Council Members - \$8,500

January 1, 2010

No Change

per Council vote on 5/18/09

January 1, 2014

Mayor - \$13,000

Council Members - \$9,700

January 1, 2018

Mayor - \$13,800

Council Members - \$10,300

January 1, 2022

Mayor - \$14,800

Council Members - \$11,100

City	Population	Mayor Compensation - Annual	City Council Compensation - Annual	Effective Date	Notes
Sioux City	85172	\$15,000	\$13,000	1/1/2020	(Ord. 1553, 10-27-2003; amd. Ord. 2646, 12-2-2024) The salary of each Council member shall be nine thousand dollars (\$9,000) annually and the salary of the Mayor shall be fourteen thousand dollars (\$14,000.00) annually. Effective January 1, 2028, the salary of each Council member shall be \$10,000 annually and the salary of the Mayor shall be \$15,000 annually and shall be adjusted in each subsequent year after January 1, 2028, on January 1 at an amount equal to the percentage increase in the Consumer Price Index from the preceding 12-month period from October 1 to September 30, rounded to the closest \$1.00, but in no event shall the increase be less than one percent.
Iowa City	75671	\$14,950	\$11,960	1/1/2020	
Ankeny	74455	\$10,000	\$7,000	4/18/2005	
West Des Moines	72161	\$14,000	\$9,000	Ordinance adopted in 2024	
Waterloo	66604	\$117,042	\$11,545	1/1/2025	
Ames	65676	\$11,000	\$10,000	1/1/2018	
Council Bluffs	62400	\$132,020	\$13,814.40	1/1/2025	
Dubuque	58881	\$14,800	\$11,100	1/1/2022	
Urbandale	48277	\$15,000	\$8,500	1/1/2026 - Mayor 1/1/2024 - Council	
Marion	42261	\$12,523.68	\$6,260.04	1/1/2025	
Cedar Falls	41422	\$115,510	\$8,754	1/1/2025	As of January 1, 2025, an annual salary adjustment shall be awarded equal to the average of the federal consumer price index rate (CPI-U) for the most recent 12 months issued prior to the effective date of the annual salary adjustment. (Full time Mayor also receives benefits.)
Bettendorf	39851	\$30,549	9,708	1/1/2025	

TO: Adrienne Breitfelder, City Clerk
FROM: Jennifer Larson, Chief Financial Officer
SUBJECT: Council Compensation Task Force – Budget Impact
DATE: May 8, 2025

INTRODUCTION

The purpose of this memorandum is to provide information requested related to the property tax levy and funding for expenditures after budget adoption.

DISCUSSION

Iowa Code sections 384.1 and 384.2 establishes general authority for cities to levy property taxes and the general fund levy, which is the main levy used to fund the city's general operations.

A city cannot adjust their property tax levy mid-year once the budget has been certified. Iowa cities operate on an annual budget cycle. The property tax levy is determined as part of this annual budget process. Cities are required to hold public hearings on their proposed budgets and levies before adopting them. Once the City Council adopts the budget and sets the levy rates, the budget is certified to the Iowa Department of Management and the County Auditor by April 30th each year. The County Auditor uses these certified levy rates, along with the assessed value of properties, to calculate the individual property tax bills. The first installment of property tax bills is then issued to property owners in March, and the amounts are based on the certified levies. Therefore, once the levy is certified, the city cannot go back and change the levy rate for that tax year.

A mid-year increase to Council compensation would require City staff to identify existing funds to fund the increase.

It is my recommendation that any future Council compensation review is aligned with the budget process so that it is not necessary for City staff to identify funding outside of the budget process. To do this, the Council compensation task force would need to be convened a year earlier so that the recommendation can be prepared for Fiscal Year 2030. In August/September 2028, the Council compensation task force would be convened and would make their recommendation to City Council. This recommendation would be factored into the Fiscal Year 2030 budget process. Wage increases for the City Council would take effect January 1, 2030.

While the City Council salary review was not aligned with the budget process this year, any change in compensation related to Fiscal Year 2026 would have a minimal impact on the City budget, especially since the impact on Fiscal Year 2026 would only be for six months. Historically, the City ends each year with a general fund budget surplus, and the minimal increase could be absorbed by the General Fund.



**Transmission of material in this release is embargoed until
8:30 a.m. (ET) Tuesday, May 13, 2025**

USDL-25-0786

Technical information: (202) 691-7000 • cpi_info@bls.gov • www.bls.gov/cpi
Media contact: (202) 691-5902 • PressOffice@bls.gov

CONSUMER PRICE INDEX – APRIL 2025

The Consumer Price Index for All Urban Consumers (CPI-U) increased 0.2 percent on a seasonally adjusted basis in April, after falling 0.1 percent in March, the U.S. Bureau of Labor Statistics reported today. Over the last 12 months, the all items index increased 2.3 percent before seasonal adjustment.

The index for shelter rose 0.3 percent in April, accounting for more than half of the all items monthly increase. The energy index also increased over the month, rising 0.7 percent as increases in the natural gas index and the electricity index more than offset a decline in the gasoline index. The index for food, in contrast, fell 0.1 percent in April as the food at home index decreased 0.4 percent and the food away from home index rose 0.4 percent over the month.

The index for all items less food and energy rose 0.2 percent in April, following a 0.1-percent increase in March. Indexes that increased over the month include household furnishings and operations, medical care, motor vehicle insurance, education, and personal care. The indexes for airline fares, used cars and trucks, communication, and apparel were among the major indexes that decreased in April.

The all items index rose 2.3 percent for the 12 months ending April, after rising 2.4 percent over the 12 months ending March. The April change was the smallest 12-month increase in the all items index since February 2021. The all items less food and energy index rose 2.8 percent over the last 12 months. The energy index decreased 3.7 percent for the 12 months ending April. The food index increased 2.8 percent over the last year.

Changes to leased cars and trucks source data and methodology

Effective with this release, the Bureau of Labor Statistics (BLS) has replaced the survey data collected for the CPI's leased cars and trucks index with transaction data purchased from a vendor to increase the accuracy of the index.

The Measuring Price Change in the CPI: Leased cars and trucks factsheet at www.bls.gov/cpi/factsheets/leased-cars-and-trucks.htm has been updated to reflect these changes.

Chart 1. One-month percent change in CPI for All Urban Consumers (CPI-U), seasonally adjusted, Apr. 2024 - Apr. 2025
Percent change

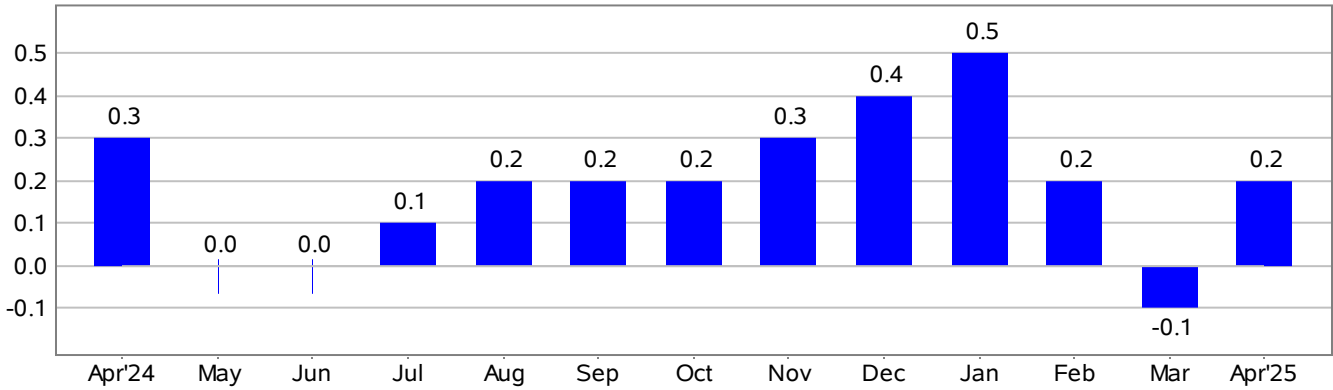


Chart 2. 12-month percent change in CPI for All Urban Consumers (CPI-U), not seasonally adjusted, Apr. 2024 - Apr. 2025
Percent change

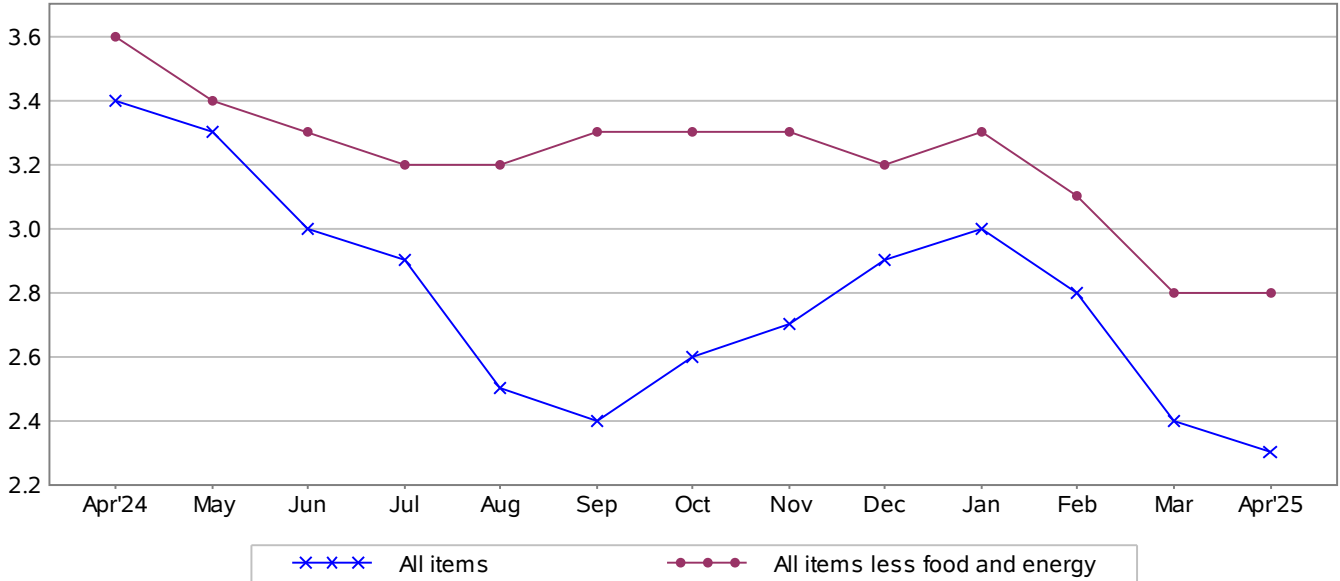


Table A. Percent changes in CPI for All Urban Consumers (CPI-U): U.S. city average

	Seasonally adjusted changes from preceding month							Un-adjusted 12-mos. ended Apr. 2025
	Oct. 2024	Nov. 2024	Dec. 2024	Jan. 2025	Feb. 2025	Mar. 2025	Apr. 2025	
All items.....	0.2	0.3	0.4	0.5	0.2	-0.1	0.2	2.3
Food.....	0.2	0.3	0.3	0.4	0.2	0.4	-0.1	2.8
Food at home.....	0.2	0.4	0.3	0.5	0.0	0.5	-0.4	2.0
Food away from home ¹	0.2	0.3	0.3	0.2	0.4	0.4	0.4	3.9
Energy.....	-0.2	0.1	2.4	1.1	0.2	-2.4	0.7	-3.7
Energy commodities.....	-1.1	0.2	3.9	1.9	-0.9	-6.1	-0.2	-11.5
Gasoline (all types).....	-1.0	0.3	4.0	1.8	-1.0	-6.3	-0.1	-11.8
Fuel oil.....	-2.3	-1.4	2.1	6.2	0.8	-4.2	-1.3	-9.6
Energy services.....	0.7	-0.1	0.8	0.3	1.4	1.6	1.5	6.2
Electricity.....	0.8	-0.2	0.2	0.0	1.0	0.9	0.8	3.6
Utility (piped) gas service.....	0.5	0.5	2.8	1.8	2.5	3.6	3.7	15.7
All items less food and energy.....	0.3	0.3	0.2	0.4	0.2	0.1	0.2	2.8
Commodities less food and energy commodities.....	0.0	0.2	0.0	0.3	0.2	-0.1	0.1	0.1
New vehicles.....	0.0	0.5	0.4	0.0	-0.1	0.1	0.0	0.3
Used cars and trucks.....	1.2	1.3	0.8	2.2	0.9	-0.7	-0.5	1.5
Apparel.....	-0.9	0.1	0.1	-1.4	0.6	0.4	-0.2	-0.7
Medical care commodities ¹	-0.2	-0.1	0.0	1.2	0.1	-1.1	0.4	1.0
Services less energy services.....	0.3	0.3	0.3	0.5	0.3	0.1	0.3	3.6
Shelter.....	0.4	0.3	0.3	0.4	0.3	0.2	0.3	4.0
Transportation services.....	0.4	0.1	0.5	1.8	-0.8	-1.4	0.1	2.5
Medical care services.....	0.3	0.3	0.2	0.0	0.3	0.5	0.5	3.1

¹ Not seasonally adjusted.

Food

The index for food decreased 0.1 percent in April, after rising 0.4 percent in March. The food at home index fell 0.4 percent over the month, the largest decline in that index since September 2020. Five of the six major grocery store food group indexes decreased in April. Driven primarily by a 12.7-percent decrease in the index for eggs, the index for meats, poultry, fish, and eggs fell 1.6 percent in April after rising in recent months. The fruits and vegetables index decreased 0.4 percent over the month and the cereals and bakery products index declined 0.5 percent. The index for other food at home decreased 0.1 percent in April and the index for dairy and related products fell 0.2 percent. In contrast, the nonalcoholic beverages index increased 0.7 percent over the month.

The food away from home index rose 0.4 percent in April. The index for full service meals rose 0.6 percent over the month and the index for limited service meals rose 0.3 percent.

The index for food at home rose 2.0 percent over the last 12 months. The meats, poultry, fish, and eggs index rose 7.0 percent over the last 12 months as the eggs index increased 49.3 percent. The index for nonalcoholic beverages increased 3.2 percent over the same period, while the index for other food at home rose 0.7 percent. The dairy and related products index increased 1.6 percent over the 12 months ending in April. The cereals and bakery products index was unchanged over the year, while the index for fruits and vegetables decreased 0.9 percent over the same period.

The food away from home index rose 3.9 percent over the last year. The index for full service meals rose 4.3 percent and the index for limited service meals rose 3.4 percent over the same period.

Energy

The energy index increased 0.7 percent in April, after falling 2.4 percent in March. The index for natural gas rose 3.7 percent over the month and the index for electricity increased 0.8 percent. The gasoline index decreased 0.1 percent over the month. (Before seasonal adjustment, gasoline prices increased 2.9 percent in April.)

The index for energy decreased 3.7 percent over the past 12 months. The gasoline index fell 11.8 percent over this 12-month span and the fuel oil index fell 9.6 percent over that period. In contrast, the index for electricity increased 3.6 percent over the last 12 months and the index for natural gas rose 15.7 percent.

All items less food and energy

The index for all items less food and energy rose 0.2 percent in April, following a 0.1-percent increase in March. The shelter index increased 0.3 percent over the month. The index for owners' equivalent rent rose 0.4 percent in April and the index for rent increased 0.3 percent. The lodging away from home index fell 0.1 percent in April.

The index for household furnishings and operations increased 1.0 percent in April, after being unchanged in March. The motor vehicle insurance index rose 0.6 percent in April. The index for education increased 0.1 percent over the month, as did the index for personal care. In contrast, the airline fares index fell 2.8 percent in April, after declining 5.3 percent in March. The index for used cars and trucks fell 0.5 percent over the month, and the indexes for communication and apparel also declined. The new vehicles index and the recreation index were unchanged in April.

The medical care index increased 0.5 percent over the month. The index for hospital services increased 0.6 percent in April and the index for physicians' services rose 0.3 percent over the month. The prescription drugs index rose 0.4 percent in April.

The index for all items less food and energy rose 2.8 percent over the past 12 months. The shelter index increased 4.0 percent over the last year. Other indexes with notable increases over the last year include medical care (+2.7 percent), motor vehicle insurance (+6.4 percent), education (+3.8 percent), and recreation (+1.6 percent).

Not seasonally adjusted CPI measures

The Consumer Price Index for All Urban Consumers (CPI-U) increased 2.3 percent over the last 12 months to an index level of 320.795 (1982-84=100). For the month, the index increased 0.3 percent prior to seasonal adjustment.

The Consumer Price Index for Urban Wage Earners and Clerical Workers (CPI-W) increased 2.1 percent over the last 12 months to an index level of 314.243 (1982-84=100). For the month, the index increased 0.3 percent prior to seasonal adjustment.

The Chained Consumer Price Index for All Urban Consumers (C-CPI-U) increased 2.1 percent over the last 12 months. For the month, the index increased 0.3 percent on a not seasonally adjusted basis. Please note that the indexes for the past 10 to 12 months are subject to revision.

The Consumer Price Index for May 2025 is scheduled to be released on Wednesday, June 11, 2025, at 8:30 a.m. (ET).

Rebasing of Selected Consumer Price Index Series

With the publication of July 2025 data on August 12, 2025, several CPI series will be rebased to December 2024 = 100. When new base years are introduced, BLS recalculates each index back to the beginning of that series to ensure continuity. A complete list of indexes to be rebased is available at www.bls.gov/cpi/additional-resources/rebased-series.htm.

Technical Note

Brief Explanation of the CPI

The Consumer Price Index (CPI) measures the change in prices paid by consumers for goods and services. The CPI reflects spending patterns for each of two population groups: all urban consumers and urban wage earners and clerical workers. The all urban consumer group represents over 90 percent of the total U.S. population. It is based on the expenditures of almost all residents of urban or metropolitan areas, including professionals, the self-employed, the poor, the unemployed, and retired people, as well as urban wage earners and clerical workers. Not included in the CPI are the spending patterns of people living in rural nonmetropolitan areas, farming families, people in the Armed Forces, and those in institutions, such as prisons and mental hospitals. Consumer inflation for all urban consumers is measured by two indexes, namely, the Consumer Price Index for All Urban Consumers (CPI-U) and the Chained Consumer Price Index for All Urban Consumers (C-CPI-U).

The Consumer Price Index for Urban Wage Earners and Clerical Workers (CPI-W) is based on the expenditures of households included in the CPI-U definition that meet two requirements: more than one-half of the household's income must come from clerical or wage occupations, and at least one of the household's earners must have been employed for at least 37 weeks during the previous 12 months. The CPI-W population represents approximately 30 percent of the total U.S. population and is a subset of the CPI-U population.

The CPIs are based on prices of food, clothing, shelter, fuels, transportation, doctors' and dentists' services, drugs, and other goods and services that people buy for day-to-day living. Prices are collected each month in 75 urban areas across the country from about 6,000 housing units and approximately 22,000 retail establishments (department stores, supermarkets, hospitals, filling stations, and other types of stores and service establishments). All taxes directly associated with the purchase and use of items are included in the index. Prices of fuels and a few other items are obtained every month in all 75 locations. Prices of most other commodities and services are collected every month in the three largest geographic areas and every other month in other areas. Prices of most goods and services are obtained by personal visit, telephone call, web, or app collection by the Bureau's trained representatives.

In calculating the index, price changes for the various items in each location are aggregated using weights, which represent their importance in the spending of the appropriate population group. Local data are then combined to obtain a U.S. city average. For the CPI-U and CPI-W, separate indexes are also published by size of city, by region of the country, for cross-classifications of regions and population-size classes, and for 23 selected local areas. Area indexes do not measure differences in the level of prices among cities; they only measure the average change in prices for each area since the base period. For the C-CPI-U, data are issued only at the national level. The CPI-U and CPI-W are considered final when released, but the C-CPI-U is issued in preliminary form and subject to three subsequent quarterly revisions.

The index measures price change from a designed reference date. For most of the CPI-U and the CPI-W, the reference base is 1982-84 equals 100. The reference base for the C-CPI-U is December 1999 equals 100. An increase of 7 percent from the reference base, for example, is shown as 107.000. Alternatively, that relationship can also be expressed as the price of a base period market basket of goods and services rising from \$100 to \$107.

Sampling Error in the CPI

The CPI is a statistical estimate that is subject to sampling error because it is based upon a sample of retail prices and not the complete universe of all prices. BLS calculates and publishes estimates of the 1-

month, 2-month, 6-month, and 12-month percent change standard errors annually for the CPI-U. These standard error estimates can be used to construct confidence intervals for hypothesis testing. For example, the estimated standard error of the 1-month percent change is 0.03 percent for the U.S. all items CPI. This means that if we repeatedly sample from the universe of all retail prices using the same methodology, and estimate a percentage change for each sample, then 95 percent of these estimates will be within 0.06 percent of the 1-month percentage change based on all retail prices. For example, for a 1-month change of 0.2 percent in the all items CPI-U, we are 95 percent confident that the actual percent change based on all retail prices would fall between 0.14 and 0.26 percent. For the latest data, including information on how to use the estimates of standard error, see www.bls.gov/cpi/tables/variance-estimates/home.htm.

Calculating Index Changes

Movements of the indexes from 1 month to another are usually expressed as percent changes rather than changes in index points, because index point changes are affected by the level of the index in relation to its base period, while percent changes are not. The following table shows an example of using index values to calculate percent changes:

	Item A	Item B	Item C
Year I	112.500	225.000	110.000
Year II	121.500	243.000	128.000
Change in index points	9.000	18.000	18.000
Percent change	$9.0/112.500 \times 100 = 8.0$	$18.0/225.000 \times 100 = 8.0$	$18.0/110.000 \times 100 = 16.4$

Use of Seasonally Adjusted and Unadjusted Data

The Consumer Price Index (CPI) program produces both unadjusted and seasonally adjusted data. Seasonally adjusted data are computed using seasonal factors derived by the X-13ARIMA-SEATS seasonal adjustment method. These factors are updated each February, and the new factors are used to revise the previous 5 years of seasonally adjusted data. The factors are available at www.bls.gov/cpi/tables/seasonal-adjustment/seasonal-factors-2025.xlsx. For more information on data revision scheduling, please see the Factsheet on Seasonal Adjustment at www.bls.gov/cpi/seasonal-adjustment/questions-and-answers.htm and the Timeline of Seasonal Adjustment Methodological Changes at www.bls.gov/cpi/seasonal-adjustment/timeline-seasonal-adjustment-methodology-changes.htm.

How to Use Seasonally Adjusted and Unadjusted Data

For analyzing short-term price trends in the economy, seasonally adjusted changes are usually preferred since they eliminate the effect of changes that normally occur at the same time and in about the same magnitude every year—such as price movements resulting from weather events, production cycles, model changeovers, holidays, and sales. This allows data users to focus on changes that are not typical for the time of year.

The unadjusted data are of primary interest to consumers concerned about the prices they actually pay. Unadjusted data are also used extensively for escalation purposes. Many collective bargaining contract agreements and pension plans, for example, tie compensation changes to the Consumer Price Index

before adjustment for seasonal variation. BLS advises against the use of seasonally adjusted data in escalation agreements because seasonally adjusted series are revised annually for five years.

Intervention Analysis

The Bureau of Labor Statistics uses intervention analysis seasonal adjustment (IASA) for some CPI series. Sometimes extreme values or sharp movements can distort the underlying seasonal pattern of price change. Intervention analysis seasonal adjustment is a process by which the distortions caused by such unusual events are estimated and removed from the data prior to calculation of seasonal factors. The resulting seasonal factors, which more accurately represent the seasonal pattern, are then applied to the unadjusted data.

For example, this procedure was used for the motor fuel series to offset the effects of the 2009 return to normal pricing after the worldwide economic downturn in 2008. Retaining this outlier data during seasonal factor calculation would distort the computation of the seasonal portion of the time series data for motor fuel, so it was estimated and removed from the data prior to seasonal adjustment. Following that, seasonal factors were calculated based on this “prior adjusted” data. These seasonal factors represent a clearer picture of the seasonal pattern in the data. The last step is for motor fuel seasonal factors to be applied to the unadjusted data.

For the seasonal factors introduced for January 2025, BLS adjusted 63 series using intervention analysis seasonal adjustment, including selected food and beverage items, motor fuels and vehicles.

Revision of Seasonally Adjusted Indexes

Seasonally adjusted data, including the U.S. city average all items index levels, are subject to revision for up to 5 years after their original release. Every year, economists in the CPI calculate new seasonal factors for seasonally adjusted series and apply them to the last 5 years of data. Seasonally adjusted indexes beyond the last 5 years of data are considered to be final and not subject to revision. For January 2025, revised seasonal factors and seasonally adjusted indexes for 2020 to 2024 were calculated and published. For series which are directly adjusted using the Census X-13ARIMA-SEATS seasonal adjustment software, the seasonal factors for 2024 will be applied to data for 2025 to produce the seasonally adjusted 2025 indexes. Series which are indirectly seasonally adjusted by summing seasonally adjusted component series have seasonal factors which are derived and are therefore not available in advance.

Determining Seasonal Status

Each year the seasonal status of every series is reevaluated based upon certain statistical criteria. Using these criteria, BLS economists determine whether a series should change its status from "not seasonally adjusted" to "seasonally adjusted", or vice versa. If any of the 81 components of the U.S. city average all items index change their seasonal adjustment status from seasonally adjusted to not seasonally adjusted, not seasonally adjusted data will be used in the aggregation of the dependent series for the last 5 years, but the seasonally adjusted indexes before that period will not be changed. For 2025, 34 of the 81 components of the U.S. city average all items index are not seasonally adjusted.

Contact Information

For additional information about the CPI visit www.bls.gov/cpi or contact the CPI Information and Analysis Section at 202-691-7000 or cpi_info@bls.gov.

For additional information on seasonal adjustment in the CPI visit www.bls.gov/cpi/seasonal-adjustment/home.htm

If you are deaf, hard of hearing, or have a speech disability, please dial 7-1-1 to access telecommunications relay services.

Table 1. Consumer Price Index for All Urban Consumers (CPI-U): U.S. city average, by expenditure category, April 2025

[1982-84=100, unless otherwise noted]

Expenditure category	Relative importance Mar. 2025	Unadjusted indexes			Unadjusted percent change		Seasonally adjusted percent change		
		Apr. 2024	Mar. 2025	Apr. 2025	Apr. 2024-Apr. 2025	Mar. 2025-Apr. 2025	Jan. 2025-Feb. 2025	Feb. 2025-Mar. 2025	Mar. 2025-Apr. 2025
All items.....	100.000	313.548	319.799	320.795	2.3	0.3	0.2	-0.1	0.2
Food.....	13.681	328.678	337.751	337.747	2.8	0.0	0.2	0.4	-0.1
Food at home.....	8.051	305.707	312.815	311.840	2.0	-0.3	0.0	0.5	-0.4
Cereals and bakery products.....	1.101	355.852	358.450	355.976	0.0	-0.7	0.4	-0.1	-0.5
Meats, poultry, fish, and eggs.....	1.669	322.323	348.179	344.883	7.0	-0.9	1.6	1.3	-1.6
Dairy and related products ¹	0.734	267.474	272.244	271.750	1.6	-0.2	-1.0	1.0	-0.2
Fruits and vegetables.....	1.307	352.274	350.379	349.187	-0.9	-0.3	-0.5	-0.5	-0.4
Nonalcoholic beverages and beverage materials.....	0.909	220.712	226.835	227.738	3.2	0.4	-0.5	0.6	0.7
Other food at home.....	2.331	273.306	275.216	275.270	0.7	0.0	-0.5	0.5	-0.1
Food away from home ¹	5.629	365.813	378.363	380.039	3.9	0.4	0.4	0.4	0.4
Energy.....	6.312	290.760	275.734	279.888	-3.7	1.5	0.2	-2.4	0.7
Energy commodities.....	3.151	328.797	284.059	290.949	-11.5	2.4	-0.9	-6.1	-0.2
Fuel oil.....	0.077	381.962	358.803	345.315	-9.6	-3.8	0.8	-4.2	-1.3
Motor fuel.....	3.009	323.189	277.604	285.351	-11.7	2.8	-0.9	-6.2	-0.1
Gasoline (all types).....	2.927	322.434	276.558	284.526	-11.8	2.9	-1.0	-6.3	-0.1
Energy services.....	3.161	264.252	278.929	280.577	6.2	0.6	1.4	1.6	1.5
Electricity.....	2.390	276.653	285.983	286.652	3.6	0.2	1.0	0.9	0.8
Utility (piped) gas service.....	0.771	221.729	252.218	256.501	15.7	1.7	2.5	3.6	3.7
All items less food and energy.....	80.007	317.978	325.933	326.815	2.8	0.3	0.2	0.1	0.2
Commodities less food and energy.....	19.367	165.700	165.707	165.916	0.1	0.1	0.2	-0.1	0.1
Apparel.....	2.577	133.502	134.082	132.544	-0.7	-1.1	0.6	0.4	-0.2
New vehicles.....	4.350	178.250	178.168	178.795	0.3	0.4	-0.1	0.1	0.0
Used cars and trucks.....	2.380	180.132	181.932	182.861	1.5	0.5	0.9	-0.7	-0.5
Medical care commodities ¹	1.509	410.743	412.995	414.709	1.0	0.4	0.1	-1.1	0.4
Alcoholic beverages ¹	0.833	289.717	294.847	294.880	1.8	0.0	0.5	0.2	0.0
Tobacco and smoking products ¹	0.483	1,509.890	1,612.246	1,616.786	7.1	0.3	0.6	0.6	0.3
Services less energy services.....	60.640	414.828	428.368	429.724	3.6	0.3	0.3	0.1	0.3
Shelter.....	35.426	397.539	411.990	413.389	4.0	0.3	0.3	0.2	0.3
Rent of primary residence.....	7.463	416.386	431.798	432.956	4.0	0.3	0.3	0.3	0.3
Owners' equivalent rent of residences ²	26.176	407.538	423.955	425.106	4.3	0.3	0.3	0.4	0.4
Medical care services.....	6.736	610.151	626.888	629.307	3.1	0.4	0.3	0.5	0.5
Physicians' services ¹	1.814	415.648	427.102	428.574	3.1	0.3	0.4	0.3	0.3
Hospital services ^{1, 3}	1.949	415.025	427.689	430.162	3.6	0.6	0.1	1.1	0.6
Transportation services.....	6.270	434.629	442.901	445.550	2.5	0.6	-0.8	-1.4	0.1
Motor vehicle maintenance and repair ¹	1.022	404.380	424.012	426.849	5.6	0.7	0.3	0.8	0.7
Motor vehicle insurance.....	2.829	839.077	890.353	892.553	6.4	0.2	0.3	-0.8	0.6
Airline fares.....	0.872	277.450	252.620	255.592	-7.9	1.2	-4.0	-5.3	-2.8

¹ Not seasonally adjusted.

² Indexes on a December 1982=100 base.

³ Indexes on a December 1996=100 base.

Table 2. Consumer Price Index for All Urban Consumers (CPI-U): U.S. city average, by detailed expenditure category, April 2025

[1982-84=100, unless otherwise noted]

Expenditure category	Relative importance Mar. 2025	Unadjusted percent change		Seasonally adjusted percent change		
		Apr. 2024- Apr. 2025	Mar. 2025- Apr. 2025	Jan. 2025- Feb. 2025	Feb. 2025- Mar. 2025	Mar. 2025- Apr. 2025
All items.....	100.000	2.3	0.3	0.2	-0.1	0.2
Food.....	13.681	2.8	0.0	0.2	0.4	-0.1
Food at home.....	8.051	2.0	-0.3	0.0	0.5	-0.4
Cereals and bakery products.....	1.101	0.0	-0.7	0.4	-0.1	-0.5
Cereals and cereal products.....	0.336	-2.5	-1.7	1.3	-0.2	-1.5
Flour and prepared flour mixes.....	0.030	0.6	-0.9	0.5	1.5	0.1
Breakfast cereal ¹	0.146	-2.6	-2.5	2.1	1.6	-2.5
Rice, pasta, cornmeal.....	0.159	-2.6	-1.0	0.2	-0.8	-0.8
Rice ^{1, 2, 3}		-2.7	-2.3	0.7	0.2	-2.3
Bakery products ¹	0.765	1.2	-0.3	0.2	0.1	-0.3
Bread ^{1, 2}	0.139	1.9	1.6	0.4	-1.0	1.6
White bread ^{1, 3}		1.6	1.5	-0.1	-0.9	1.5
Bread other than white ^{1, 3}		1.9	1.7	1.2	-1.6	1.7
Fresh biscuits, rolls, muffins ²	0.136	3.1	-1.0	0.1	0.1	0.2
Cakes, cupcakes, and cookies ¹	0.212	1.5	-0.1	-0.5	0.9	-0.1
Cookies ^{1, 3}		1.7	-0.4	-2.4	1.7	-0.4
Fresh cakes and cupcakes ^{1, 3}		2.1	0.6	0.7	1.7	0.6
Other bakery products.....	0.279	-0.6	-0.9	0.0	0.2	-1.0
Fresh sweetrolls, coffeecakes, doughnuts ^{1, 3}		4.2	-1.1	-0.4	0.6	-1.1
Crackers, bread, and cracker products ³		-0.8	-1.0	-1.4	1.4	-1.2
Frozen and refrigerated bakery products, pies, tarts, turnovers ³		-3.2	-2.6	1.0	-0.8	-2.9
Meats, poultry, fish, and eggs.....	1.669	7.0	-0.9	1.6	1.3	-1.6
Meats, poultry, and fish.....	1.450	3.4	0.5	0.5	0.6	0.0
Meats.....	0.926	4.4	0.2	0.7	1.1	-0.2
Beef and veal.....	0.456	8.5	0.7	2.4	1.2	0.1
Uncooked ground beef ¹	0.208	10.0	0.0	2.7	3.1	0.0
Uncooked beef roasts ²	0.057	8.8	0.6	2.8	-0.3	-0.2
Uncooked beef steaks ²	0.130	7.0	1.3	0.1	0.3	0.8
Uncooked other beef and veal ^{1, 2}	0.061	7.7	1.7	3.1	-0.7	1.7
Pork.....	0.288	1.3	-1.3	-1.4	1.7	-1.4
Bacon, breakfast sausage, and related products ²	0.103	1.5	-0.8	-0.9	1.5	-1.6
Bacon and related products ³		3.9	0.0	-2.3	2.4	-1.0
Breakfast sausage and related products ^{2, 3}		-1.1	-2.3	1.0	0.1	-2.1
Ham.....	0.044	4.3	-1.5	-2.3	2.4	0.8
Ham, excluding canned ³		4.7	-1.4	-2.6	2.5	1.1
Pork chops ¹	0.049	0.6	-1.6	-1.5	2.5	-1.6
Other pork including roasts, steaks, and ribs ²	0.092	0.0	-1.7	-1.1	1.3	-2.5
Other meats.....	0.181	0.4	1.2	-0.4	-0.3	1.2
Frankfurters ³		-4.3	-6.0	-0.8	1.0	-5.2
Lunchmeats ^{1, 2, 3}		-0.2	1.1	-0.4	-0.4	1.1
Poultry.....	0.286	2.4	0.9	-0.2	0.9	0.2
Chicken ²	0.214	2.7	0.5	0.3	0.5	-0.3
Fresh whole chicken ³		2.1	1.0	-1.6	0.6	0.2
Fresh and frozen chicken parts ³		2.8	0.3	0.7	0.6	-0.6
Other uncooked poultry including turkey ²	0.071	0.7	2.3	-0.4	1.2	1.8
Fish and seafood.....	0.238	0.7	1.3	0.7	-1.5	0.7
Fresh fish and seafood ^{1, 2}	0.140	1.0	0.8	0.1	-0.4	0.8
Processed fish and seafood ²	0.098	-0.1	2.1	0.6	-2.0	1.2
Shelf stable fish and seafood ³		-1.7	1.8	-0.1	-3.0	1.6
Frozen fish and seafood ³		3.1	2.2	1.4	-1.3	0.6
Eggs.....	0.219	49.3	-10.5	10.4	5.9	-12.7

See footnotes at end of table.

Table 2. Consumer Price Index for All Urban Consumers (CPI-U): U.S. city average, by detailed expenditure category, April 2025 — Continued
 [1982-84=100, unless otherwise noted]

Expenditure category	Relative importance Mar. 2025	Unadjusted percent change		Seasonally adjusted percent change		
		Apr. 2024- Apr. 2025	Mar. 2025- Apr. 2025	Jan. 2025- Feb. 2025	Feb. 2025- Mar. 2025	Mar. 2025- Apr. 2025
Dairy and related products ¹	0.734	1.6	-0.2	-1.0	1.0	-0.2
Milk ^{1, 2}	0.197	3.9	0.7	-0.6	1.0	0.7
Fresh whole milk ^{1, 3}		3.5	0.1	0.5	0.9	0.1
Fresh milk other than whole ^{1, 2, 3}		4.1	0.9	-1.1	1.2	0.9
Cheese and related products ¹	0.254	2.1	-0.2	-1.2	1.9	-0.2
Ice cream and related products.....	0.129	-2.8	-0.8	-2.2	-0.4	-1.4
Other dairy and related products ²	0.154	1.6	-0.8	0.5	1.0	-1.3
Fruits and vegetables.....	1.307	-0.9	-0.3	-0.5	-0.5	-0.4
Fresh fruits and vegetables.....	1.084	-0.7	-0.1	-0.7	-0.7	-0.2
Fresh fruits.....	0.556	1.5	0.3	-0.8	-0.4	-0.3
Apples.....	0.081	6.8	0.2	-0.4	0.5	-0.1
Bananas ¹	0.108	0.0	1.2	0.1	1.1	1.2
Citrus fruits ²	0.062	-0.7	-1.1	-1.7	-1.3	-2.8
Oranges, including tangerines ³		-0.2	-2.4	-0.3	-0.5	-3.7
Other fresh fruits ²	0.304	1.3	0.3	-0.8	-1.5	-0.5
Fresh vegetables.....	0.528	-2.9	-0.6	-0.5	-1.0	-0.1
Potatoes.....	0.083	-0.5	0.4	-0.2	-0.9	0.3
Lettuce.....	0.066	-6.4	0.3	1.8	-3.5	0.3
Tomatoes.....	0.086	-6.4	-1.0	-3.2	-0.7	1.1
Other fresh vegetables.....	0.294	-1.6	-0.9	-0.1	-0.6	-0.3
Processed fruits and vegetables ²	0.223	-0.6	-1.3	0.3	0.6	-1.6
Canned fruits and vegetables ²	0.090	0.2	-1.3	-0.1	0.6	-1.3
Canned fruits ^{2, 3}		1.2	-1.3	-2.2	1.3	-1.0
Canned vegetables ^{2, 3}		-0.2	-1.5	1.0	0.3	-1.5
Frozen fruits and vegetables ²	0.068	-2.1	-2.2	2.0	0.9	-3.0
Frozen vegetables ³		-3.7	-2.5	1.9	0.6	-3.2
Other processed fruits and vegetables including dried ²	0.065	0.8	-0.6	-0.8	0.9	-1.2
Dried beans, peas, and lentils ^{1, 2, 3}		5.6	1.6	-0.3	0.1	1.6
Nonalcoholic beverages and beverage materials.....	0.909	3.2	0.4	-0.5	0.6	0.7
Juices and nonalcoholic drinks ²	0.641	1.8	-0.3	-0.8	0.7	0.2
Carbonated drinks.....	0.353	0.7	-0.4	-0.6	1.3	-0.1
Frozen noncarbonated juices and drinks ^{1, 2}	0.004	5.7	-0.4	1.5	-0.5	-0.4
Nonfrozen noncarbonated juices and drinks ²	0.285	2.1	0.0	-1.2	-0.1	0.6
Beverage materials including coffee and tea ²	0.268	6.6	1.9	0.6	0.4	2.0
Coffee.....	0.138	9.6	2.0	1.8	0.9	2.4
Roasted coffee ³		9.1	1.5	2.1	0.6	2.4
Instant coffee ^{1, 3}		13.5	2.3	1.5	1.9	2.3
Other beverage materials including tea ^{1, 2}	0.130	3.0	1.9	0.5	-0.7	1.9
Other food at home.....	2.331	0.7	0.0	-0.5	0.5	-0.1
Sugar and sweets.....	0.333	3.6	0.3	-0.3	0.2	0.6
Sugar and sugar substitutes.....	0.028	1.7	0.8	-0.5	0.1	0.6
Candy and chewing gum ²	0.233	6.3	0.8	-0.2	0.6	1.4
Other sweets ²	0.072	-2.8	-1.6	-0.8	-0.8	-1.7
Fats and oils.....	0.249	-1.6	-1.7	-0.2	0.5	-1.5
Butter and margarine ²	0.056	0.4	-1.4	0.8	-0.3	-0.7
Butter ³		1.5	-1.8	0.2	-0.8	0.3
Margarine ³		2.6	2.4	0.7	0.9	1.2
Salad dressing ^{1, 2}	0.065	-0.9	-1.5	-0.7	0.8	-1.5
Other fats and oils including peanut butter ²	0.128	-2.7	-1.9	-0.6	0.9	-2.8
Peanut butter ^{1, 2, 3}		-2.6	-1.4	-2.7	0.2	-1.4
Other foods.....	1.750	0.5	0.2	-0.6	0.6	-0.1
Soups.....	0.106	1.3	2.2	-0.9	1.1	0.8
Frozen and freeze dried prepared foods.....	0.271	1.5	1.1	-1.7	-0.1	1.0

See footnotes at end of table.

Table 2. Consumer Price Index for All Urban Consumers (CPI-U): U.S. city average, by detailed expenditure category, April 2025 — Continued
 [1982-84=100, unless otherwise noted]

Expenditure category	Relative importance Mar. 2025	Unadjusted percent change		Seasonally adjusted percent change		
		Apr. 2024- Apr. 2025	Mar. 2025- Apr. 2025	Jan. 2025- Feb. 2025	Feb. 2025- Mar. 2025	Mar. 2025- Apr. 2025
Snacks.....	0.369	-0.1	-0.2	-1.0	0.9	-0.7
Spices, seasonings, condiments, sauces.....	0.388	0.3	-0.9	-0.2	0.6	-0.4
Salt and other seasonings and spices ^{2, 3}		-4.9	-2.8	-0.7	-1.4	-1.8
Olives, pickles, relishes ^{2, 3}		3.0	0.3	5.5	-5.0	0.6
Sauces and gravies ^{2, 3}		1.5	-1.0	0.8	1.8	-0.6
Other condiments ³		10.3	7.7	-0.8	-2.7	8.0
Baby food and formula ^{1, 2}	0.060	1.2	0.9	-0.4	0.6	0.9
Other miscellaneous foods ²	0.556	0.4	0.4	-0.2	0.7	0.2
Prepared salads ^{3, 4}		4.6	0.6	-0.4	2.0	1.6
Food away from home ¹	5.629	3.9	0.4	0.4	0.4	0.4
Full service meals and snacks ^{1, 2}	2.429	4.3	0.6	0.4	0.6	0.6
Limited service meals and snacks ^{1, 2}	2.832	3.4	0.3	0.3	0.2	0.3
Food at employee sites and schools ^{1, 2}	0.071	3.7	0.0	0.5	0.1	0.0
Food at elementary and secondary schools ^{1, 3, 5}		3.3	0.0	0.1	0.0	0.0
Food from vending machines and mobile vendors ^{1, 2}	0.056	6.5	1.2	0.3	2.0	1.2
Other food away from home ^{1, 2}	0.241	4.8	0.3	0.8	0.2	0.3
Energy.....	6.312	-3.7	1.5	0.2	-2.4	0.7
Energy commodities.....	3.151	-11.5	2.4	-0.9	-6.1	-0.2
Fuel oil and other fuels.....	0.142	-7.2	-5.3	-0.2	-3.0	-2.6
Fuel oil.....	0.077	-9.6	-3.8	0.8	-4.2	-1.3
Propane, kerosene, and firewood ⁶	0.065	-5.6	-7.1	-0.7	-1.5	-4.7
Motor fuel.....	3.009	-11.7	2.8	-0.9	-6.2	-0.1
Gasoline (all types).....	2.927	-11.8	2.9	-1.0	-6.3	-0.1
Gasoline, unleaded regular ³		-12.3	3.0	-1.1	-6.6	0.2
Gasoline, unleaded midgrade ^{3, 7}		-10.1	2.5	-0.9	-5.6	0.0
Gasoline, unleaded premium ³		-9.1	2.4	-0.5	-4.4	-0.5
Other motor fuels ^{1, 2}	0.082	-10.2	-0.4	2.2	-1.3	-0.4
Energy services.....	3.161	6.2	0.6	1.4	1.6	1.5
Electricity.....	2.390	3.6	0.2	1.0	0.9	0.8
Utility (piped) gas service.....	0.771	15.7	1.7	2.5	3.6	3.7
All items less food and energy.....	80.007	2.8	0.3	0.2	0.1	0.2
Commodities less food and energy commodities.....	19.367	0.1	0.1	0.2	-0.1	0.1
Household furnishings and supplies ⁸	3.373	0.3	0.2	0.2	0.0	0.2
Window and floor coverings and other linens ²	0.242	-1.5	-1.0	1.4	-1.5	-0.4
Floor coverings ^{1, 2}	0.058	-4.6	-0.7	-0.5	0.2	-0.7
Window coverings ^{1, 2}	0.054	0.0	-0.4	-0.3	-1.2	-0.4
Other linens ²	0.130	-0.8	-1.5	2.5	-1.6	-0.6
Furniture and bedding ¹	0.783	0.2	1.5	-0.1	0.6	1.5
Bedroom furniture ¹	0.255	-1.2	1.6	-0.3	2.7	1.6
Living room, kitchen, and dining room furniture ^{1, 2}	0.380	3.3	2.4	0.1	-0.3	2.4
Other furniture ²	0.139	-5.8	-1.5	-1.0	-0.9	-0.9
Appliances ²	0.217	-1.2	0.7	0.5	-0.1	0.8
Major appliances ²	0.069	-3.6	0.6	1.4	-1.8	1.3
Laundry equipment ^{1, 3}		4.0	-0.8	3.3	0.8	-0.8
Other appliances ²	0.146	-0.1	0.8	-0.2	0.5	0.8
Other household equipment and furnishings ²	0.501	0.6	-1.4	0.2	0.6	-0.9
Clocks, lamps, and decorator items ¹	0.297	2.3	-1.1	1.2	1.6	-1.1
Indoor plants and flowers ⁹	0.114	0.8	-2.2	1.4	-2.4	1.0
Dishes and flatware ^{1, 2}	0.037	-8.7	-2.6	2.8	-1.7	-2.6
Nonelectric cookware and tableware ²	0.053	-1.9	-0.9	-2.9	0.8	0.0
Tools, hardware, outdoor equipment and supplies ^{1, 2}	0.836	0.7	0.1	0.9	-0.4	0.1
Tools, hardware and supplies ²	0.239	0.3	1.2	0.0	0.2	1.2
Outdoor equipment and supplies ^{1, 2}	0.363	1.0	-0.7	1.2	-1.0	-0.7

See footnotes at end of table.

Table 2. Consumer Price Index for All Urban Consumers (CPI-U): U.S. city average, by detailed expenditure category, April 2025 — Continued
 [1982-84=100, unless otherwise noted]

Expenditure category	Relative importance Mar. 2025	Unadjusted percent change		Seasonally adjusted percent change		
		Apr. 2024- Apr. 2025	Mar. 2025- Apr. 2025	Jan. 2025- Feb. 2025	Feb. 2025- Mar. 2025	Mar. 2025- Apr. 2025
Housekeeping supplies ¹	0.793	1.0	0.1	-0.5	0.0	0.1
Household cleaning products ^{1, 2}	0.293	2.4	0.6	-1.0	0.0	0.6
Household paper products ^{1, 2}	0.175	0.0	-0.2	-0.1	-0.3	-0.2
Miscellaneous household products ^{1, 2}	0.324	0.4	-0.2	-0.1	0.2	-0.2
Apparel.....	2.577	-0.7	-1.1	0.6	0.4	-0.2
Men's and boys' apparel.....	0.686	1.1	-0.8	0.7	0.4	-0.1
Men's apparel.....	0.557	0.7	-1.1	0.7	1.1	-0.4
Men's suits, sport coats, and outerwear.....	0.095	5.3	-0.4	5.5	-2.1	0.3
Men's underwear, nightwear, swimwear, and accessories.....	0.147	1.8	0.3	-0.4	2.1	1.1
Men's shirts and sweaters ²	0.159	-4.1	-5.1	-1.2	4.3	-2.8
Men's pants and shorts.....	0.139	2.3	1.6	-0.5	1.0	0.7
Boys' apparel.....	0.130	1.7	0.1	0.3	-2.6	1.0
Women's and girls' apparel.....	1.016	-1.5	-0.9	0.4	0.6	0.3
Women's apparel.....	0.901	-1.1	-1.0	0.0	1.2	0.4
Women's outerwear.....	0.080	6.2	-1.6	-0.2	4.4	0.9
Women's dresses.....	0.134	-5.1	-1.9	2.5	-0.3	-0.6
Women's suits and separates ²	0.370	-1.9	-0.4	0.8	-0.3	1.2
Women's underwear, nightwear, swimwear, and accessories ²	0.305	0.9	-1.3	-0.4	0.6	-1.1
Girls' apparel.....	0.115	-3.8	-0.3	3.6	-3.9	-0.3
Footwear.....	0.584	-1.3	-1.2	0.0	-0.1	-0.5
Men's footwear.....	0.201	-1.5	-2.2	1.5	-0.1	-1.3
Boys' and girls' footwear ¹	0.111	-2.9	-1.1	1.3	0.2	-1.1
Women's footwear.....	0.272	-0.6	-0.5	-1.1	-0.1	0.2
Infants' and toddlers' apparel.....	0.103	-4.4	-1.3	-0.1	-0.9	-1.1
Jewelry and watches ⁶	0.188	1.2	-3.1	3.6	1.1	-1.9
Watches ^{1, 6}	0.042	1.0	-1.5	-0.1	0.8	-1.5
Jewelry ⁶	0.146	1.6	-3.5	3.3	2.4	-2.0
Transportation commodities less motor fuel ⁸	7.224	0.8	0.4	0.2	-0.2	-0.2
New vehicles.....	4.350	0.3	0.4	-0.1	0.1	0.0
New cars ³		0.8	0.5	0.1	0.3	0.1
New trucks ^{3, 10}		0.3	0.3	-0.1	0.1	0.0
Used cars and trucks.....	2.380	1.5	0.5	0.9	-0.7	-0.5
Motor vehicle parts and equipment ¹	0.358	1.2	-0.1	-0.5	-0.1	-0.1
Tires ¹	0.295	1.5	-0.4	-0.5	0.3	-0.4
Vehicle accessories other than tires ^{1, 2}	0.063	0.6	1.5	-0.2	-2.2	1.5
Vehicle parts and equipment other than tires ^{1, 3}		0.3	2.2	-0.5	-2.6	2.2
Motor oil, coolant, and fluids ^{1, 3}		-1.0	-1.0	0.5	-1.0	-1.0
Medical care commodities ¹	1.509	1.0	0.4	0.1	-1.1	0.4
Medicinal drugs ^{1, 8}	1.333	1.1	0.4	0.2	-1.3	0.4
Prescription drugs ¹	0.917	2.3	0.4	0.0	-2.0	0.4
Nonprescription drugs ⁸	0.416	-1.1	0.5	0.6	-0.3	0.3
Medical equipment and supplies ^{1, 8}	0.176	-0.5	0.4	-0.4	0.2	0.4
Recreation commodities ⁸	1.818	-1.8	0.4	-0.7	-0.3	0.4
Video and audio products ⁸	0.247	-1.6	1.0	-0.6	-0.3	1.0
Televisions.....	0.086	-9.9	-2.1	-1.9	-1.5	-2.1
Other video equipment ²	0.029	-3.9	-1.4	0.5	0.1	-1.8
Audio equipment ¹	0.053	6.0	8.8	-0.1	-1.2	8.8
Recorded music and music subscriptions ^{1, 2}	0.075	5.2	0.2	0.0	1.7	0.2
Pets and pet products ¹	0.624	-0.2	0.3	0.0	-0.3	0.3
Pet food and treats ^{1, 2, 3}		-0.6	-0.1	0.6	-0.5	-0.1
Purchase of pets, pet supplies, accessories ^{1, 2, 3}		1.9	1.2	-0.7	0.1	1.2
Sporting goods ¹	0.462	-5.2	0.6	-2.2	-0.6	0.6

See footnotes at end of table.

Table 2. Consumer Price Index for All Urban Consumers (CPI-U): U.S. city average, by detailed expenditure category, April 2025 — Continued
 [1982-84=100, unless otherwise noted]

Expenditure category	Relative importance Mar. 2025	Unadjusted percent change		Seasonally adjusted percent change		
		Apr. 2024-Apr. 2025	Mar. 2025-Apr. 2025	Jan. 2025-Feb. 2025	Feb. 2025-Mar. 2025	Mar. 2025-Apr. 2025
Sports vehicles including bicycles ¹	0.225	-6.6	1.8	-4.2	-1.1	1.8
Sports equipment ¹	0.221	-3.7	-0.6	-0.1	-0.1	-0.6
Photographic equipment and supplies.....	0.019	1.2	1.6	-0.7	-0.8	2.2
Photographic equipment ^{1, 2, 3}		0.8	1.0	0.8	-1.0	1.0
Recreational reading materials ¹	0.101	2.0	-1.0	0.0	2.1	-1.0
Newspapers and magazines ^{1, 2}	0.056	2.9	-2.3	1.1	4.0	-2.3
Recreational books ^{1, 2}	0.045	1.0	0.7	-1.2	-0.1	0.7
Other recreational goods ²	0.365	-0.9	0.1	-0.2	-0.7	0.2
Toys.....	0.286	-1.4	0.1	-0.2	-0.9	0.3
Toys, games, hobbies and playground equipment ^{2, 3}		-1.3	-0.2	-0.5	-0.6	-0.3
Sewing machines, fabric and supplies ^{1, 2}	0.022	-2.6	-1.0	0.0	-1.9	-1.0
Music instruments and accessories ^{1, 2}	0.043	4.7	0.3	-0.2	1.4	0.3
Education and communication commodities ⁸	0.743	-5.3	0.5	-0.2	0.5	0.3
Educational books and supplies ¹	0.042	10.2	-0.2	0.1	1.8	-0.2
College textbooks ^{1, 3, 11}		10.4	-0.2	0.6	1.2	-0.2
Information technology commodities ⁸	0.701	-6.8	0.5	-0.2	0.4	0.3
Computers, peripherals, and smart home assistants ^{1, 4}	0.264	-5.6	0.7	0.7	0.2	0.7
Computer software and accessories ^{1, 2}	0.028	2.6	3.2	3.3	0.4	3.2
Telephone hardware, calculators, and other consumer information items ²	0.409	-8.1	0.2	-0.9	0.5	-0.1
Smartphones ^{1, 3, 12}		-14.0	-0.6	-1.7	-1.1	-0.6
Alcoholic beverages ¹	0.833	1.8	0.0	0.5	0.2	0.0
Alcoholic beverages at home.....	0.448	0.8	-0.1	0.1	0.3	-0.1
Beer, ale, and other malt beverages at home ¹	0.153	1.4	0.1	0.6	0.0	0.1
Distilled spirits at home ¹	0.102	1.9	0.6	-0.4	1.1	0.6
Whiskey at home ^{1, 3}		-0.9	0.5	-0.6	0.6	0.5
Distilled spirits, excluding whiskey, at home ^{1, 3}		2.4	0.7	0.0	1.4	0.7
Wine at home.....	0.193	-0.4	-0.7	0.4	0.2	-0.8
Alcoholic beverages away from home ¹	0.385	3.0	0.2	0.5	0.1	0.2
Beer, ale, and other malt beverages away from home ^{1, 2, 3}		2.6	-0.1	0.3	0.0	-0.1
Wine away from home ^{1, 2, 3}		2.2	0.6	0.1	0.2	0.6
Distilled spirits away from home ^{1, 2, 3}		4.0	-0.2	1.5	0.0	-0.2
Other goods ⁸	1.291	3.2	0.3	0.8	0.3	0.3
Tobacco and smoking products ¹	0.483	7.1	0.3	0.6	0.6	0.3
Cigarettes ^{1, 2}	0.363	8.5	0.6	0.8	0.6	0.6
Tobacco products other than cigarettes ^{1, 2}	0.115	1.5	-0.7	0.0	0.9	-0.7
Personal care products ¹	0.649	0.4	0.1	0.9	0.0	0.1
Hair, dental, shaving, and miscellaneous personal care products ^{1, 2}	0.291	0.6	-0.3	1.6	-0.1	-0.3
Cosmetics, perfume, bath, nail preparations and implements ¹	0.349	0.2	0.5	0.3	0.0	0.5
Miscellaneous personal goods ²	0.159	1.9	1.3	1.4	0.4	1.2
Stationery, stationery supplies, gift wrap ³		3.9	-0.8	1.5	0.5	-0.8
Services less energy services.....	60.640	3.6	0.3	0.3	0.1	0.3
Shelter.....	35.426	4.0	0.3	0.3	0.2	0.3
Rent of shelter ¹³	35.014	4.0	0.3	0.2	0.2	0.4
Rent of primary residence.....	7.463	4.0	0.3	0.3	0.3	0.3
Lodging away from home ²	1.375	-1.4	2.0	0.2	-3.5	-0.1
Housing at school, excluding board ¹³	0.241	3.8	0.1	0.3	0.3	0.3
Other lodging away from home including hotels and motels.....	1.134	-2.3	2.5	0.2	-4.3	-0.2
Owners' equivalent rent of residences ¹³	26.176	4.3	0.3	0.3	0.4	0.4

See footnotes at end of table.

Table 2. Consumer Price Index for All Urban Consumers (CPI-U): U.S. city average, by detailed expenditure category, April 2025 — Continued
 [1982-84=100, unless otherwise noted]

Expenditure category	Relative importance Mar. 2025	Unadjusted percent change		Seasonally adjusted percent change		
		Apr. 2024-Apr. 2025	Mar. 2025-Apr. 2025	Jan. 2025-Feb. 2025	Feb. 2025-Mar. 2025	Mar. 2025-Apr. 2025
Owners' equivalent rent of primary residence ¹³ ..	24.983	4.3	0.3	0.3	0.4	0.4
Tenants' and household insurance ^{1,2}	0.411	2.6	0.3	0.8	-0.3	0.3
Water and sewer and trash collection services ²	1.085	4.9	0.3	1.0	0.2	0.3
Water and sewerage maintenance ¹	0.740	4.7	0.3	0.6	0.3	0.3
Garbage and trash collection ^{1,10}	0.344	5.2	0.2	1.9	0.0	0.2
Household operations ^{1,2}						
Domestic services ^{1,2}						
Gardening and lawncare services ^{1,2}						
Moving, storage, freight expense ²	0.124	1.0	0.4	0.3	0.3	-0.8
Repair of household items ^{1,2}						
Medical care services.....	6.736	3.1	0.4	0.3	0.5	0.5
Professional services.....	3.666	2.7	0.3	0.3	0.2	0.4
Physicians' services ¹	1.814	3.1	0.3	0.4	0.3	0.3
Dental services.....	0.927	2.2	0.2	-0.1	0.3	0.5
Eyeglasses and eye care ^{1,6}	0.333	2.9	-0.4	0.6	0.0	-0.4
Services by other medical professionals ^{1,6}	0.592	2.3	0.6	0.2	-0.2	0.6
Hospital and related services ¹	2.276	3.8	0.5	0.2	1.3	0.5
Hospital services ^{1,14}	1.949	3.6	0.6	0.1	1.1	0.6
Inpatient hospital services ^{1,3,14}		4.3	0.4	0.2	2.0	0.4
Outpatient hospital services ^{1,3,6}		2.9	0.7	0.1	0.7	0.7
Nursing homes and adult day services ¹⁴	0.166	4.6	0.1	1.0	0.7	0.3
Care of invalids and elderly at home ^{1,5}				0.3	4.9	
Health insurance ^{1,5}	0.793	3.3	0.4	0.3	0.4	0.4
Transportation services.....	6.270	2.5	0.6	-0.8	-1.4	0.1
Leased cars and trucks ^{1,11}	0.388					
Car and truck rental ²	0.127	-2.1	5.5	-1.3	-2.7	4.3
Motor vehicle maintenance and repair ¹	1.022	5.6	0.7	0.3	0.8	0.7
Motor vehicle body work ¹				-1.8	1.2	
Motor vehicle maintenance and servicing ¹	0.506	4.5	0.2	0.1	0.2	0.2
Motor vehicle repair ^{1,2}	0.402	7.6	1.2	0.7	1.6	1.2
Motor vehicle insurance.....	2.829	6.4	0.2	0.3	-0.8	0.6
Motor vehicle fees ^{1,2}	0.499	1.2	0.1	0.0	-0.5	0.1
State motor vehicle registration and license fees ^{1,2}	0.281	2.0	0.3	0.3	0.1	0.3
Parking and other fees ^{1,2}	0.204	0.4	-0.1	-0.3	-1.3	-0.1
Parking fees and tolls ^{2,3}		2.8	1.4	0.2	0.5	1.5
Public transportation.....	1.405	-5.6	0.9	-3.4	-4.2	-1.8
Airline fares.....	0.872	-7.9	1.2	-4.0	-5.3	-2.8
Other intercity transportation.....	0.209	-1.4	1.3	-3.0	1.8	0.2
Ship fare ^{1,2,3}		-3.7	-0.8	-1.2	-0.5	-0.8
Intracity transportation ¹	0.320	1.4	-0.2	-0.6	0.5	-0.2
Intracity mass transit ^{1,3,8}		2.2	-0.1	1.2	0.1	-0.1
Recreation services ⁸	3.496	3.6	-0.3	0.8	0.1	-0.3
Video and audio services ⁸	0.826	0.6	-0.8	1.0	-0.7	-0.6
Cable, satellite, and live streaming television service ¹⁰	0.665	0.3	-0.7	0.7	-0.9	-0.4
Purchase, subscription, and rental of video ^{1,2}	0.161	2.4	-1.5	2.1	0.0	-1.5
Video discs and other media ^{1,2,3}		1.0	-1.2	1.0	-1.9	-1.2
Subscription and rental of video and video games ^{1,2,3}		9.0	-0.7	2.6	3.2	-0.7
Pet services including veterinary ²	0.536	4.6	0.4	1.1	-0.2	0.0
Pet services ^{2,3}		5.4	1.3	-0.7	-0.5	1.1
Veterinarian services ^{1,2,3}		5.3	0.2	2.3	0.5	0.2
Photographers and photo processing ^{1,2}				1.3	-1.0	

See footnotes at end of table.

Table 2. Consumer Price Index for All Urban Consumers (CPI-U): U.S. city average, by detailed expenditure category, April 2025 — Continued
 [1982-84=100, unless otherwise noted]

Expenditure category	Relative importance Mar. 2025	Unadjusted percent change		Seasonally adjusted percent change		
		Apr. 2024-Apr. 2025	Mar. 2025-Apr. 2025	Jan. 2025-Feb. 2025	Feb. 2025-Mar. 2025	Mar. 2025-Apr. 2025
Other recreation services ²	2.078	5.1	-0.3	0.6	0.5	-0.2
Club membership for shopping clubs, fraternal, or other organizations, or participant sports fees ²	0.818	4.9	0.0	0.4	0.2	0.1
Admissions ¹	0.760	5.9	-0.5	1.1	0.8	-0.5
Admission to movies, theaters, and concerts ^{1, 2, 3}		3.4	1.1	0.3	0.4	1.1
Admission to sporting events ^{1, 2, 3}		9.3	-12.2	7.2	2.3	-12.2
Fees for lessons or instructions ^{1, 6}	0.167	2.5	-1.2	-0.3	0.1	-1.2
Education and communication services ⁸	4.949	1.2	-0.3	0.3	0.2	-0.2
Tuition, other school fees, and childcare.....	2.517	3.6	0.0	0.2	0.4	0.1
College tuition and fees.....	1.303	2.3	0.0	0.2	0.2	0.2
Elementary and high school tuition and fees.....	0.385	5.2	-0.1	0.4	0.9	0.3
Day care and preschool ^{1, 9}	0.724	5.4	0.0	0.5	0.1	0.0
Technical and business school tuition and fees ²	0.039	1.0	0.0	0.1	0.5	-0.1
Postage and delivery services ²	0.053	2.9	0.0	-2.7	0.4	0.4
Postage.....	0.051	3.2	0.0	-2.9	0.4	0.4
Delivery services ²	0.002	6.2	0.4	1.3	0.3	0.8
Telephone services ^{1, 2}	1.434	0.0	0.0	0.1	-0.1	0.0
Wireless telephone services ^{1, 2}	1.262	-0.3	0.1	-0.1	-0.1	0.1
Residential telephone services ^{1, 8}	0.172	2.2	-0.7	1.6	-0.2	-0.7
Internet services and electronic information providers ^{1, 2}	0.937	-2.9	-1.5	1.1	0.3	-1.5
Other personal services ^{1, 8}	1.648	3.9	0.2	0.9	1.6	0.2
Personal care services ¹	0.657	3.6	0.1	0.4	0.1	0.1
Haircuts and other personal care services ^{1, 2}	0.657	3.6	0.1	0.4	0.1	0.1
Miscellaneous personal services ¹	0.990	4.0	0.3	1.3	2.6	0.3
Legal services ^{1, 6}						
Funeral expenses ^{1, 6}	0.141	2.1	0.2	0.7	0.7	0.2
Laundry and dry cleaning services ^{1, 2}	0.163	3.3	0.2	0.5	0.0	0.2
Apparel services other than laundry and dry cleaning ^{1, 2}	0.027	1.0	-2.6	0.3	1.2	-2.6
Financial services ^{1, 6}	0.250	2.4	1.3	1.9	6.8	1.3
Checking account and other bank services ^{1, 2, 3}		2.9	0.0	0.0	0.0	0.0
Tax return preparation and other accounting fees ^{1, 2, 3}		3.4	1.9	3.3	9.5	1.9

¹ Not seasonally adjusted.
² Indexes on a December 1997=100 base.
³ Special index based on a substantially smaller sample.
⁴ Indexes on a December 2007=100 base.
⁵ Indexes on a December 2005=100 base.
⁶ Indexes on a December 1986=100 base.
⁷ Indexes on a December 1993=100 base.
⁸ Indexes on a December 2009=100 base.
⁹ Indexes on a December 1990=100 base.
¹⁰ Indexes on a December 1983=100 base.
¹¹ Indexes on a December 2001=100 base.
¹² Indexes on a December 2019=100 base.
¹³ Indexes on a December 1982=100 base.
¹⁴ Indexes on a December 1996=100 base.

Table 3. Consumer Price Index for All Urban Consumers (CPI-U): U.S. city average, special aggregate indexes, April 2025

[1982-84=100, unless otherwise noted]

Special aggregate indexes	Relative importance Mar. 2025	Unadjusted indexes			Unadjusted percent change		Seasonally adjusted percent change		
		Apr. 2024	Mar. 2025	Apr. 2025	Apr. 2024-Apr. 2025	Mar. 2025-Apr. 2025	Jan. 2025-Feb. 2025	Feb. 2025-Mar. 2025	Mar. 2025-Apr. 2025
All items less food.....	86.319	311.182	317.017	318.161	2.2	0.4	0.2	-0.1	0.3
All items less shelter.....	64.574	284.224	287.234	288.084	1.4	0.3	0.2	-0.2	0.2
All items less food and shelter.....	50.894	273.263	274.922	275.956	1.0	0.4	0.2	-0.4	0.2
All items less food, shelter, and energy.....	44.582	273.967	278.230	278.830	1.8	0.2	0.2	-0.1	0.2
All items less food, shelter, energy, and used cars and trucks.....	42.201	279.271	283.698	284.264	1.8	0.2	0.1	0.0	0.2
All items less medical care.....	91.755	301.559	307.484	308.420	2.3	0.3	0.2	-0.1	0.2
All items less energy.....	93.688	318.689	326.781	327.535	2.8	0.2	0.2	0.1	0.2
Commodities.....	36.199	224.926	223.871	224.494	-0.2	0.3	0.1	-0.4	0.0
Commodities less food, energy, and used cars and trucks.....	16.987	164.141	163.974	164.093	0.0	0.1	0.1	0.0	0.1
Commodities less food.....	22.518	181.119	176.791	177.584	-2.0	0.4	0.1	-1.0	0.0
Commodities less food and beverages.....	21.685	177.393	172.868	173.672	-2.1	0.5	0.0	-1.0	0.0
Services.....	63.801	401.020	414.555	415.924	3.7	0.3	0.3	0.2	0.4
Services less rent of shelter ¹	28.787	415.161	427.695	429.054	3.3	0.3	0.4	0.3	0.3
Services less medical care services.....	57.066	384.975	398.247	399.536	3.8	0.3	0.3	0.2	0.3
Durables.....	10.891	123.372	122.428	122.916	-0.4	0.4	-0.1	0.0	0.2
Nondurables.....	25.308	279.693	278.797	279.429	-0.1	0.2	0.0	-0.9	-0.1
Nondurables less food.....	11.627	238.653	230.057	231.195	-3.1	0.5	-0.2	-2.3	-0.1
Nondurables less food and beverages.....	10.794	235.493	226.103	227.306	-3.5	0.5	-0.2	-2.5	-0.1
Nondurables less food, beverages, and apparel.....	8.218	304.097	288.034	291.083	-4.3	1.1	-0.5	-3.3	-0.1
Nondurables less food and apparel.....	9.050	301.226	287.114	289.877	-3.8	1.0	-0.5	-3.0	-0.1
Housing.....	44.217	331.688	343.512	344.801	4.0	0.4	0.4	0.3	0.5
Education and communication ²	5.692	146.040	146.621	146.354	0.2	-0.2	0.2	0.3	-0.1
Education ²	2.559	295.736	306.847	306.829	3.8	0.0	0.2	0.4	0.1
Communication ²	3.133	74.986	73.467	73.228	-2.3	-0.3	0.3	0.1	-0.4
Information and information processing ²	3.080	70.556	69.051	68.822	-2.5	-0.3	0.4	0.1	-0.4
Information technology, hardware and services ³	1.646	7.106	6.820	6.777	-4.6	-0.6	0.6	0.4	-0.7
Recreation ²	5.313	138.412	140.740	140.627	1.6	-0.1	0.3	-0.1	0.0
Video and audio ²	1.073	119.272	119.879	119.394	0.1	-0.4	0.6	-0.6	-0.3
Pets, pet products and services ²	1.160	223.045	226.462	227.266	1.9	0.4	0.5	-0.3	0.2
Photography ²	0.075	87.154	85.485	85.742	-1.6	0.3	0.8	-0.9	0.5
Food and beverages.....	14.513	326.107	334.920	334.918	2.7	0.0	0.2	0.4	-0.1
Domestically produced farm food.....	6.796	316.011	323.712	322.132	1.9	-0.5	0.1	0.5	-0.5
Other services.....	10.092	414.998	425.976	425.090	2.4	-0.2	0.6	0.4	-0.2
Apparel less footwear.....	1.993	125.431	126.287	124.860	-0.5	-1.1	0.8	0.5	-0.1
Fuels and utilities.....	4.388	311.410	327.077	328.138	5.4	0.3	1.2	1.1	1.1
Household energy.....	3.303	260.399	273.881	274.805	5.5	0.3	1.3	1.4	1.4
Medical care.....	8.245	561.612	574.739	576.988	2.7	0.4	0.3	0.2	0.5
Transportation.....	16.503	276.687	270.061	272.503	-1.5	0.9	-0.4	-1.8	0.0
Private transportation.....	15.098	275.873	270.344	272.793	-1.1	0.9	-0.1	-1.6	0.1
New and used motor vehicles ²	7.381	125.017	124.857	125.514	0.4	0.5	0.1	-0.3	0.0
Utilities and public transportation.....	7.750	259.890	264.525	265.541	2.2	0.4	0.1	0.2	0.1
Household furnishings and operations.....	4.403	147.173	149.420	150.485	2.3	0.7	0.4	0.0	1.0
Other goods and services.....	2.939	556.486	574.766	576.398	3.6	0.3	0.6	1.0	0.1
Personal care.....	2.455	282.151	289.143	289.965	2.8	0.3	0.6	1.0	0.1

¹ Indexes on a December 1982=100 base.

² Indexes on a December 1997=100 base.

³ Indexes on a December 1988=100 base.

Table 4. Consumer Price Index for All Urban Consumers (CPI-U): Selected areas, all items index, April 2025
 [1982-84=100, unless otherwise noted]

Area	Pricing Schedule ¹	Percent change to Apr. 2025 from:			Percent change to Mar. 2025 from:		
		Apr. 2024	Feb. 2025	Mar. 2025	Mar. 2024	Jan. 2025	Feb. 2025
U.S. city average.....	M	2.3	0.5	0.3	2.4	0.7	0.2
Region and area size²							
Northeast.....	M	3.1	0.3	0.3	3.2	0.6	0.0
Northeast - Size Class A.....	M	3.5	0.3	0.5	3.4	0.5	-0.2
Northeast - Size Class B/C ³	M	2.7	0.3	0.1	3.0	0.8	0.2
New England ⁴	M	3.0	-0.1	0.2	3.2	0.5	-0.3
Middle Atlantic ⁴	M	3.2	0.5	0.4	3.2	0.7	0.1
Midwest.....	M	2.4	0.5	0.2	2.7	0.6	0.3
Midwest - Size Class A.....	M	2.4	0.5	0.3	2.7	0.5	0.2
Midwest - Size Class B/C ³	M	2.4	0.5	0.1	2.8	0.7	0.4
East North Central ⁴	M	2.4	0.6	0.1	2.8	0.7	0.4
West North Central ⁴	M	2.3	0.3	0.2	2.5	0.5	0.1
South.....	M	2.0	0.4	0.3	1.9	0.4	0.1
South - Size Class A.....	M	1.9	0.4	0.3	1.8	0.5	0.0
South - Size Class B/C ³	M	2.0	0.3	0.3	1.9	0.4	0.1
South Atlantic ⁴	M	2.1	0.4	0.3	2.0	0.5	0.2
East South Central ⁴	M	2.5	0.4	0.3	2.8	0.5	0.2
West South Central ⁴	M	1.4	0.1	0.4	1.3	0.2	-0.2
West.....	M	2.1	1.0	0.5	2.2	1.1	0.5
West - Size Class A.....	M	2.3	0.7	0.3	2.6	1.0	0.4
West - Size Class B/C ³	M	2.0	1.3	0.6	1.8	1.2	0.7
Mountain ⁴	M	1.2	0.7	0.3	1.3	1.0	0.4
Pacific ⁴	M	2.5	1.1	0.5	2.6	1.1	0.6
Size classes							
Size Class A ⁵	M	2.4	0.5	0.4	2.6	0.6	0.1
Size Class B/C ³	M	2.2	0.6	0.3	2.3	0.7	0.3
Selected local areas							
Chicago-Naperville-Elgin, IL-IN-WI.....	M	3.1	0.5	0.1	3.7	0.5	0.5
Los Angeles-Long Beach-Anaheim, CA.....	M	3.0	1.2	0.6	3.0	0.9	0.7
New York-Newark-Jersey City, NY-NJ-PA.....	M	3.9	0.5	0.4	3.8	0.4	0.1
Atlanta-Sandy Springs-Roswell, GA.....	2	1.9	0.1				
Baltimore-Columbia-Towson, MD ⁶	2	3.0	0.9				
Detroit-Warren-Dearborn, MI.....	2	1.4	0.8				
Houston-The Woodlands-Sugar Land, TX.....	2	1.2	0.9				
Miami-Fort Lauderdale-West Palm Beach, FL.....	2	2.2	0.3				
Philadelphia-Camden-Wilmington, PA-NJ-DE-MD.....	2	2.9	0.5				
Phoenix-Mesa-Scottsdale, AZ ⁷	2	0.3	0.4				
San Francisco-Oakland-Hayward, CA.....	2	1.3	0.4				
Seattle-Tacoma-Bellevue, WA.....	2	1.7	0.4				
St. Louis, MO-IL.....	2	2.2	1.2				
Urban Alaska.....	2	1.6	0.9				
Boston-Cambridge-Newton, MA-NH.....	1				2.5	0.1	
Dallas-Fort Worth-Arlington, TX.....	1				1.4	-0.4	
Denver-Aurora-Lakewood, CO.....	1				1.9	0.2	
Minneapolis-St.Paul-Bloomington, MN-WI.....	1				2.2	-0.3	
Riverside-San Bernardino-Ontario, CA ⁴	1				2.5	1.0	
San Diego-Carlsbad, CA.....	1				3.8	0.8	
Tampa-St. Petersburg-Clearwater, FL ⁸	1				2.1	0.7	
Urban Hawaii.....	1				2.6	0.0	
Washington-Arlington-Alexandria, DC-VA-MD-WV ⁶	1				2.4	0.8	

¹ Foods, fuels, and several other items are priced every month in all areas. Most other goods and services are priced as indicated: M - Every month. 1 - January, March, May, July, September, and November. 2 - February, April, June, August, October, and December.

² Regions defined as the four Census regions.

³ Indexes on a December 1996=100 base.

⁴ Indexes on a December 2017=100 base.

⁵ Indexes on a December 1986=100 base.

⁶ 1998 - 2017 indexes based on substantially smaller sample.

⁷ Indexes on a December 2001=100 base.

⁸ Indexes on a 1987=100 base.

NOTE: Local area indexes are byproducts of the national CPI program. Each local index has a smaller sample size than the national index and is, therefore, subject to substantially more sampling and other measurement error. As a result, local area indexes show greater volatility than the national index, although their long-term trends are similar. Therefore, the Bureau of Labor Statistics strongly urges users to consider adopting the national average CPI for use in their escalator clauses.

Table 5. Chained Consumer Price Index for All Urban Consumers (C-CPI-U) and the Consumer Price Index for All Urban Consumers (CPI-U): U.S. city average, all items index, April 2025
 [Percent changes]

Month Year	Unadjusted 1-month percent change		Unadjusted 12-month percent change	
	C-CPI-U ¹	CPI-U	C-CPI-U ¹	CPI-U
December 2012.....			1.5	1.7
December 2013.....			1.3	1.5
December 2014.....			0.5	0.8
December 2015.....			0.4	0.7
December 2016.....			1.8	2.1
December 2017.....			1.7	2.1
December 2018.....			1.5	1.9
December 2019.....			1.8	2.3
December 2020.....			1.5	1.4
December 2021.....			6.5	7.0
December 2022.....			6.4	6.5
January 2023.....	0.8	0.8	6.4	6.4
February 2023.....	0.5	0.6	6.0	6.0
March 2023.....	0.3	0.3	4.8	5.0
April 2023.....	0.5	0.5	4.7	4.9
May 2023.....	0.2	0.3	3.8	4.0
June 2023.....	0.3	0.3	2.9	3.0
July 2023.....	0.1	0.2	3.0	3.2
August 2023.....	0.4	0.4	3.5	3.7
September 2023.....	0.2	0.2	3.4	3.7
October 2023.....	0.0	0.0	2.9	3.2
November 2023.....	-0.3	-0.2	2.7	3.1
December 2023.....	-0.1	-0.1	2.9	3.4
January 2024.....	0.5	0.5	2.6	3.1
February 2024.....	0.6	0.6	2.8	3.2
March 2024.....	0.6	0.6	3.1	3.5
April 2024.....	0.4	0.4	3.0	3.4
May 2024.....	0.1	0.2	2.9	3.3
June 2024.....	0.0	0.0	2.6	3.0
July 2024.....	0.1	0.1	2.6	2.9
August 2024.....	0.1	0.1	2.3	2.5
September 2024.....	0.1	0.2	2.2	2.4
October 2024.....	0.1	0.1	2.3	2.6
November 2024.....	-0.1	-0.1	2.5	2.7
December 2024.....	0.0	0.0	2.7	2.9
January 2025.....	0.6	0.7	2.8	3.0
February 2025.....	0.4	0.4	2.6	2.8
March 2025.....	0.2	0.2	2.1	2.4
April 2025.....	0.3	0.3	2.1	2.3

¹ The C-CPI-U is designed to be a closer approximation to a cost-of-living index in that it, in its final form, accounts for any substitution that consumers make across item categories in response to changes in relative prices. Since the expenditure data required for the calculation of the C-CPI-U are available only with a time lag, the C-CPI-U is issued first in preliminary form using the latest available expenditure data at that time and is subject to four revisions.

Indexes are issued as initial estimates. Indexes are revised each quarter with the publication of January, April, July, and October data as updated expenditure estimates become available. The C-CPI-U indexes are updated quarterly until they become final. January-March indexes are final in January of the following year; April-June indexes are final in April of the following year; July-September indexes are final in July of the following year; October-December indexes are final in October of the following year.

Table 6. Consumer Price Index for All Urban Consumers (CPI-U): U.S. city average, by expenditure category, April 2025, 1-month analysis table
 [1982-84=100, unless otherwise noted]

Expenditure category	Relative importance Mar. 2025	One Month				
		Seasonally adjusted percent change Mar. 2025-Apr. 2025	Seasonally adjusted effect on All Items Mar. 2025-Apr. 2025 ¹	Standard error, median price change ²	Largest (L) or Smallest (S) seasonally adjusted change since: ³	
					Date	Percent change
All items.....	100.000	0.2		0.05	L-Feb.2025	0.2
Food.....	13.681	-0.1	-0.011	0.07	S-Jul.2020	-0.4
Food at home.....	8.051	-0.4	-0.036	0.12	S-Sep.2020	-0.4
Cereals and bakery products.....	1.101	-0.5	-0.005	0.30	S-Nov.2024	-1.2
Cereals and cereal products.....	0.336	-1.5	-0.005	0.50	S-Jan.2025	-2.1
Flour and prepared flour mixes.....	0.030	0.1	0.000	0.75	S-Jan.2025	-0.2
Breakfast cereal ⁴	0.146	-2.5	-0.004	0.93	S-Jan.2025	-3.3
Rice, pasta, cornmeal.....	0.159	-0.8	-0.001	0.63	—	—
Rice ^{4, 5, 6}		-2.3		0.73	S-Sep.2016	-2.4
Bakery products ⁴	0.765	-0.3	-0.002	0.38	S-Nov.2024	-1.4
Bread ^{4, 5}	0.139	1.6	0.002	0.61	L-Oct.2024	1.9
White bread ^{4, 6}		1.5		0.64	L-Nov.2022	1.7
Bread other than white ^{4, 6}		1.7		1.08	L-Oct.2024	2.8
Fresh biscuits, rolls, muffins ⁵	0.136	0.2	0.000	1.02	L-Jan.2025	1.8
Cakes, cupcakes, and cookies ⁴	0.212	-0.1	0.000	0.59	S-Feb.2025	-0.5
Cookies ^{4, 6}		-0.4		0.80	S-Feb.2025	-2.4
Fresh cakes and cupcakes ^{4, 6}		0.6		0.69	S-Jan.2025	-2.6
Other bakery products.....	0.279	-1.0	-0.003	0.64	S-Nov.2024	-1.6
Fresh sweetrolls, coffeecakes, doughnuts ^{4, 6}		-1.1		0.84	S-Feb.2024	-1.9
Crackers, bread, and cracker products ⁶		-1.2		1.02	S-Feb.2025	-1.4
Frozen and refrigerated bakery products, pies, tarts, turnovers ⁶		-2.9		1.14	S-EVER	—
Meats, poultry, fish, and eggs.....	1.669	-1.6	-0.027	0.24	S-Jul.2020	-3.8
Meats, poultry, and fish.....	1.450	0.0	0.000	0.25	S-Oct.2024	-0.4
Meats.....	0.926	-0.2	-0.002	0.31	S-Oct.2024	-0.7
Beef and veal.....	0.456	0.1	0.000	0.46	S-Oct.2024	-0.6
Uncooked ground beef ⁴	0.208	0.0	0.000	0.69	S-Jan.2025	-0.9
Uncooked beef roasts ⁵	0.057	-0.2	0.000	1.10	L-Feb.2025	2.8
Uncooked beef steaks ⁵	0.130	0.8	0.001	0.81	L-Jan.2025	2.8
Uncooked other beef and veal ^{4, 5}	0.061	1.7	0.001	0.88	L-Feb.2025	3.1
Pork.....	0.288	-1.4	-0.004	0.55	S-Feb.2025	-1.4
Bacon, breakfast sausage, and related products ⁵	0.103	-1.6	-0.002	0.89	S-Apr.2023	-2.0
Bacon and related products ⁶		-1.0		1.07	S-Feb.2025	-2.3
Breakfast sausage and related products ^{5, 6}		-2.1		1.18	S-Dec.2018	-2.4
Ham.....	0.044	0.8	0.000	1.06	S-Feb.2025	-2.3
Ham, excluding canned ⁶		1.1		1.11	S-Feb.2025	-2.6
Pork chops ⁴	0.049	-1.6	-0.001	1.29	S-Jan.2025	-1.9
Other pork including roasts, steaks, and ribs ⁵	0.092	-2.5	-0.002	1.20	S-Jun.2023	-2.5
Other meats.....	0.181	1.2	0.002	0.58	L-Oct.2022	2.0
Frankfurters ⁶		-5.2		1.36	S-Jul.2022	-5.9
Lunchmeats ^{4, 5, 6}		1.1		0.76	L-May 2024	1.1
Poultry.....	0.286	0.2	0.000	0.50	S-Feb.2025	-0.2
Chicken ⁵	0.214	-0.3	-0.001	0.53	S-Jun.2024	-0.3
Fresh whole chicken ⁶		0.2		0.99	S-Feb.2025	-1.6
Fresh and frozen chicken parts ⁶		-0.6		0.69	S-Apr.2024	-2.0
Other uncooked poultry including turkey ⁵	0.071	1.8	0.001	1.20	L-Jul.2023	2.3
Fish and seafood.....	0.238	0.7	0.002	0.60	L-Feb.2025	0.7
Fresh fish and seafood ^{4, 5}	0.140	0.8	0.001	0.83	L-Jan.2025	1.6
Processed fish and seafood ⁵	0.098	1.2	0.001	0.96	L-Mar.2024	1.2
Shelf stable fish and seafood ⁶		1.6		1.43	L-Aug.2023	2.2
Frozen fish and seafood ⁶		0.6		1.19	L-Feb.2025	1.4

See footnotes at end of table.

Table 6. Consumer Price Index for All Urban Consumers (CPI-U): U.S. city average, by expenditure category, April 2025, 1-month analysis table — Continued
 [1982-84=100, unless otherwise noted]

Expenditure category	Relative importance Mar. 2025	One Month				
		Seasonally adjusted percent change Mar. 2025-Apr. 2025	Seasonally adjusted effect on All Items Mar. 2025-Apr. 2025 ¹	Standard error, median price change ²	Largest (L) or Smallest (S) seasonally adjusted change since: ³	
					Date	Percent change
Eggs.....	0.219	-12.7	-0.027	1.00	S-Mar.1984	-12.7
Dairy and related products ⁴	0.734	-0.2	-0.001	0.29	S-Feb.2025	-1.0
Milk ^{4, 5}	0.197	0.7	0.001	0.39	S-Feb.2025	-0.6
Fresh whole milk ^{4, 6}		0.1		0.49	S-Jan.2025	-1.0
Fresh milk other than whole ^{4, 5, 6}		0.9		0.55	S-Feb.2025	-1.1
Cheese and related products ⁴	0.254	-0.2	0.000	0.69	S-Feb.2025	-1.2
Ice cream and related products.....	0.129	-1.4	-0.002	1.04	S-Feb.2025	-2.2
Other dairy and related products ⁵	0.154	-1.3	-0.002	0.54	S-May 2023	-1.3
Fruits and vegetables.....	1.307	-0.4	-0.006	0.32	L-Dec.2024	0.1
Fresh fruits and vegetables.....	1.084	-0.2	-0.002	0.41	L-Dec.2024	0.0
Fresh fruits.....	0.556	-0.3	-0.002	0.58	L-Jan.2025	0.5
Apples.....	0.081	-0.1	0.000	0.95	S-Feb.2025	-0.4
Bananas ⁴	0.108	1.2	0.001	0.65	L-Feb.2024	1.7
Citrus fruits ⁵	0.062	-2.8	-0.002	0.88	S-Jun.2022	-2.8
Oranges, including tangerines ⁶		-3.7		1.44	S-Jul.2021	-4.9
Other fresh fruits ⁵	0.304	-0.5	-0.002	1.11	L-Jan.2025	1.3
Fresh vegetables.....	0.528	-0.1	0.000	0.58	L-Dec.2024	0.4
Potatoes.....	0.083	0.3	0.000	0.97	L-Dec.2024	0.5
Lettuce.....	0.066	0.3	0.000	1.17	L-Feb.2025	1.8
Tomatoes.....	0.086	1.1	0.001	1.22	L-Dec.2024	1.1
Other fresh vegetables.....	0.294	-0.3	-0.001	0.79	L-Feb.2025	-0.1
Processed fruits and vegetables ⁵	0.223	-1.6	-0.004	0.47	S-Apr.2019	-1.7
Canned fruits and vegetables ⁵	0.090	-1.3	-0.001	0.60	S-Apr.2019	-2.0
Canned fruits ^{5, 6}		-1.0		0.94	S-Feb.2025	-2.2
Canned vegetables ^{5, 6}		-1.5		0.90	S-Jul.2019	-1.7
Frozen fruits and vegetables ⁵	0.068	-3.0	-0.002	0.89	S-EVER	-
Frozen vegetables ⁶		-3.2		1.08	S-EVER	-
Other processed fruits and vegetables including dried ⁵	0.065	-1.2	-0.001	0.66	S-Nov.2023	-1.3
Dried beans, peas, and lentils ^{4, 5, 6}		1.6		0.76	L-May 2024	2.4
Nonalcoholic beverages and beverage materials.....	0.909	0.7	0.006	0.40	L-Jan.2025	0.9
Juices and nonalcoholic drinks ⁵	0.641	0.2	0.001	0.48	S-Feb.2025	-0.8
Carbonated drinks.....	0.353	-0.1	0.000	0.93	S-Feb.2025	-0.6
Frozen noncarbonated juices and drinks ^{4, 5}	0.004	-0.4	0.000	0.81	L-Feb.2025	1.5
Nonfrozen noncarbonated juices and drinks ⁵	0.285	0.6	0.002	0.49	L-Jan.2025	0.8
Beverage materials including coffee and tea ⁵	0.268	2.0	0.005	0.68	L-Jul.2022	2.8
Coffee.....	0.138	2.4	0.003	0.97	L-Jul.2022	2.9
Roasted coffee ⁶		2.4		1.25	L-Jul.2022	2.4
Instant coffee ^{4, 6}		2.3		1.07	L-Jan.2025	4.4
Other beverage materials including tea ^{4, 5}	0.130	1.9	0.002	1.06	L-Feb.2024	2.9
Other food at home.....	2.331	-0.1	-0.003	0.24	S-Feb.2025	-0.5
Sugar and sweets.....	0.333	0.6	0.002	0.44	L-Jan.2025	1.3
Sugar and sugar substitutes.....	0.028	0.6	0.000	0.62	L-Apr.2024	1.1
Candy and chewing gum ⁵	0.233	1.4	0.003	0.60	L-Jan.2025	1.8
Other sweets ⁵	0.072	-1.7	-0.001	0.82	S-Sep.2020	-1.9
Fats and oils.....	0.249	-1.5	-0.004	0.53	S-Apr.2019	-2.1
Butter and margarine ⁵	0.056	-0.7	0.000	0.99	S-Dec.2024	-1.1
Butter ⁶		0.3		1.11	L-Nov.2024	0.5
Margarine ⁶		1.2		1.56	L-Jan.2025	3.6
Salad dressing ^{4, 5}	0.065	-1.5	-0.001	1.52	S-Nov.2024	-1.8
Other fats and oils including peanut butter ⁵	0.128	-2.8	-0.004	0.68	S-EVER	-
Peanut butter ^{4, 5, 6}		-1.4		0.76	S-Feb.2025	-2.7
Other foods.....	1.750	-0.1	-0.001	0.30	S-Feb.2025	-0.6

See footnotes at end of table.

Table 6. Consumer Price Index for All Urban Consumers (CPI-U): U.S. city average, by expenditure category, April 2025, 1-month analysis table — Continued
 [1982-84=100, unless otherwise noted]

Expenditure category	Relative importance Mar. 2025	One Month				
		Seasonally adjusted percent change Mar. 2025-Apr. 2025	Seasonally adjusted effect on All Items Mar. 2025-Apr. 2025 ¹	Standard error, median price change ²	Largest (L) or Smallest (S) seasonally adjusted change since: ³	
					Date	Percent change
Soups.....	0.106	0.8	0.001	0.97	S-Feb.2025	-0.9
Frozen and freeze dried prepared foods.....	0.271	1.0	0.003	0.69	L-Oct.2022	1.0
Snacks.....	0.369	-0.7	-0.002	0.78	S-Feb.2025	-1.0
Spices, seasonings, condiments, sauces.....	0.388	-0.4	-0.002	0.50	S-May 2024	-0.8
Salt and other seasonings and spices ^{5, 6}		-1.8		0.91	S-Nov.2024	-1.8
Olives, pickles, relishes ^{5, 6}		0.6		0.90	L-Feb.2025	5.5
Sauces and gravies ^{5, 6}		-0.6		0.70	S-Jan.2025	-1.5
Other condiments ⁶		8.0		1.10	L-Oct.2024	11.7
Baby food and formula ^{4, 5}	0.060	0.9	0.001	0.57	L-Sep.2024	1.2
Other miscellaneous foods ⁵	0.556	0.2	0.001	0.54	S-Feb.2025	-0.2
Prepared salads ^{6, 7}		1.6		0.98	S-Feb.2025	-0.4
Food away from home ⁴	5.629	0.4	0.025	0.06	—	—
Full service meals and snacks ^{4, 5}	2.429	0.6	0.014	0.07	—	—
Limited service meals and snacks ^{4, 5}	2.832	0.3	0.010	0.09	L-Feb.2025	0.3
Food at employee sites and schools ^{4, 5}	0.071	0.0	0.000	0.29	S-Jan.2025	-0.1
Food at elementary and secondary schools ^{4, 6, 8}		0.0		0.10	—	—
Food from vending machines and mobile vendors ^{4, 5}	0.056	1.2	0.001	0.25	S-Feb.2025	0.3
Other food away from home ^{4, 5}	0.241	0.3	0.001	0.10	L-Feb.2025	0.8
Energy.....	6.312	0.7	0.042	0.15	L-Jan.2025	1.1
Energy commodities.....	3.151	-0.2	-0.007	0.18	L-Jan.2025	1.9
Fuel oil and other fuels.....	0.142	-2.6	-0.004	0.34	L-Feb.2025	-0.2
Fuel oil.....	0.077	-1.3	-0.001	0.47	L-Feb.2025	0.8
Propane, kerosene, and firewood ⁹	0.065	-4.7	-0.003	0.42	S-Apr.2014	-8.0
Motor fuel.....	3.009	-0.1	-0.003	0.19	L-Jan.2025	1.8
Gasoline (all types).....	2.927	-0.1	-0.003	0.19	L-Jan.2025	1.8
Gasoline, unleaded regular ⁶		0.2		0.46	L-Jan.2025	1.7
Gasoline, unleaded midgrade ^{6, 10}		0.0		0.43	L-Jan.2025	1.9
Gasoline, unleaded premium ⁶		-0.5		0.50	L-Feb.2025	-0.5
Other motor fuels ^{4, 5}	0.082	-0.4	0.000	0.28	L-Feb.2025	2.2
Energy services.....	3.161	1.5	0.049	0.26	S-Feb.2025	1.4
Electricity.....	2.390	0.8	0.020	0.30	S-Jan.2025	0.0
Utility (piped) gas service.....	0.771	3.7	0.029	0.44	L-Jan.2023	6.9
All items less food and energy.....	80.007	0.2	0.189	0.05	L-Feb.2025	0.2
Commodities less food and energy commodities.....	19.367	0.1	0.012	0.09	L-Feb.2025	0.2
Household furnishings and supplies ¹¹	3.373	0.2	0.007	0.21	L-Feb.2025	0.2
Window and floor coverings and other linens ⁵	0.242	-0.4	-0.001	0.90	L-Feb.2025	1.4
Floor coverings ^{4, 5}	0.058	-0.7	0.000	0.74	S-Oct.2024	-1.2
Window coverings ^{4, 5}	0.054	-0.4	0.000	1.68	L-Feb.2025	-0.3
Other linens ⁵	0.130	-0.6	-0.001	1.18	L-Feb.2025	2.5
Furniture and bedding ⁴	0.783	1.5	0.011	0.41	L-Sep.2024	1.7
Bedroom furniture ⁴	0.255	1.6	0.004	0.62	S-Feb.2025	-0.3
Living room, kitchen, and dining room furniture ^{4, 5}	0.380	2.4	0.009	0.60	L-Sep.2024	3.2
Other furniture ⁵	0.139	-0.9	-0.001	0.94	—	—
Appliances ⁵	0.217	0.8	0.002	0.68	L-Mar.2022	1.2
Major appliances ⁵	0.069	1.3	0.001	1.04	L-Feb.2025	1.4
Laundry equipment ^{4, 6}		-0.8		0.76	S-Dec.2024	-1.8
Other appliances ⁵	0.146	0.8	0.001	0.87	L-Nov.2024	1.0
Other household equipment and furnishings ⁵	0.501	-0.9	-0.005	0.53	S-Aug.2024	-1.0
Clocks, lamps, and decorator items ⁴	0.297	-1.1	-0.003	0.60	S-Sep.2024	-1.2
Indoor plants and flowers ¹²	0.114	1.0	0.001	0.89	L-Feb.2025	1.4
Dishes and flatware ^{4, 5}	0.037	-2.6	-0.001	1.59	S-May 2024	-3.2
Nonelectric cookware and tableware ⁵	0.053	0.0	0.000	1.38	S-Feb.2025	-2.9

See footnotes at end of table.

Table 6. Consumer Price Index for All Urban Consumers (CPI-U): U.S. city average, by expenditure category, April 2025, 1-month analysis table — Continued
 [1982-84=100, unless otherwise noted]

Expenditure category	Relative importance Mar. 2025	One Month				
		Seasonally adjusted percent change Mar. 2025-Apr. 2025	Seasonally adjusted effect on All Items Mar. 2025-Apr. 2025 ¹	Standard error, median price change ²	Largest (L) or Smallest (S) seasonally adjusted change since: ³	
					Date	Percent change
Tools, hardware, outdoor equipment and supplies ^{4, 5} ..	0.836	0.1	0.001	0.38	L-Feb.2025	0.9
Tools, hardware and supplies ⁵	0.239	1.2	0.003	0.59	L-Nov.2024	1.2
Outdoor equipment and supplies ^{4, 5}	0.363	-0.7	-0.003	0.53	L-Feb.2025	1.2
Housekeeping supplies ⁴	0.793	0.1	0.001	0.26	L-Jan.2025	0.1
Household cleaning products ^{4, 5}	0.293	0.6	0.002	0.42	L-Aug.2024	1.8
Household paper products ^{4, 5}	0.175	-0.2	0.000	0.34	L-Feb.2025	-0.1
Miscellaneous household products ^{4, 5}	0.324	-0.2	-0.001	0.39	S-Oct.2024	-1.0
Apparel.....	2.577	-0.2	-0.005	0.34	S-Jan.2025	-1.4
Men's and boys' apparel.....	0.686	-0.1	-0.001	0.50	S-Jan.2025	-0.5
Men's apparel.....	0.557	-0.4	-0.002	0.61	S-Jan.2025	-0.6
Men's suits, sport coats, and outerwear.....	0.095	0.3	0.000	1.98	L-Feb.2025	5.5
Men's underwear, nightwear, swimwear, and accessories.....	0.147	1.1	0.002	0.78	S-Feb.2025	-0.4
Men's shirts and sweaters ⁵	0.159	-2.8	-0.004	1.04	S-Aug.2024	-3.1
Men's pants and shorts.....	0.139	0.7	0.001	1.12	S-Feb.2025	-0.5
Boys' apparel.....	0.130	1.0	0.001	0.96	L-Sep.2024	1.6
Women's and girls' apparel.....	1.016	0.3	0.003	0.61	S-Jan.2025	-2.0
Women's apparel.....	0.901	0.4	0.004	0.66	S-Feb.2025	0.0
Women's outerwear.....	0.080	0.9	0.001	2.56	S-Feb.2025	-0.2
Women's dresses.....	0.134	-0.6	-0.001	1.89	S-Jan.2025	-4.3
Women's suits and separates ⁵	0.370	1.2	0.004	0.86	L-Apr.2024	1.6
Women's underwear, nightwear, swimwear, and accessories ⁵	0.305	-1.1	-0.003	0.89	S-Jan.2025	-2.3
Girls' apparel.....	0.115	-0.3	0.000	1.29	L-Feb.2025	3.6
Footwear.....	0.584	-0.5	-0.003	0.48	S-Jan.2025	-0.5
Men's footwear.....	0.201	-1.3	-0.003	0.82	S-Nov.2024	-1.3
Boys' and girls' footwear ⁴	0.111	-1.1	-0.001	0.86	S-Jan.2025	-2.2
Women's footwear.....	0.272	0.2	0.001	0.74	L-Jan.2025	0.4
Infants' and toddlers' apparel.....	0.103	-1.1	-0.001	0.97	S-Jun.2024	-1.4
Jewelry and watches ⁹	0.188	-1.9	-0.004	1.56	S-Jan.2025	-3.9
Watches ^{4, 9}	0.042	-1.5	-0.001	1.47	S-May 2024	-1.9
Jewelry ⁹	0.146	-2.0	-0.003	2.00	S-Jan.2025	-4.2
Transportation commodities less motor fuel ¹¹	7.224	-0.2	-0.013	0.03	—	—
New vehicles.....	4.350	0.0	0.000	0.01	S-Feb.2025	-0.1
New cars ⁶	0.1	0.1	0.000	0.06	S-Feb.2025	0.1
New trucks ^{6, 13}	0.0	0.0	0.000	0.03	S-Feb.2025	-0.1
Used cars and trucks.....	2.380	-0.5	-0.013	0.03	L-Feb.2025	0.9
Motor vehicle parts and equipment ⁴	0.358	-0.1	0.000	0.36	—	—
Tires ⁴	0.295	-0.4	-0.001	0.40	S-Feb.2025	-0.5
Vehicle accessories other than tires ^{4, 5}	0.063	1.5	0.001	0.62	L-Nov.2023	2.4
Vehicle parts and equipment other than tires ^{4, 6}	0.063	2.2	0.001	0.78	L-Nov.2023	3.6
Motor oil, coolant, and fluids ^{4, 6}	0.063	-1.0	0.000	0.63	—	—
Medical care commodities ⁴	1.509	0.4	0.006	0.28	L-Jan.2025	1.2
Medicinal drugs ^{4, 11}	1.333	0.4	0.006	0.30	L-Jan.2025	1.4
Prescription drugs ⁴	0.917	0.4	0.003	0.26	L-Jan.2025	2.5
Nonprescription drugs ¹¹	0.416	0.3	0.001	0.63	L-Feb.2025	0.6
Medical equipment and supplies ^{4, 11}	0.176	0.4	0.001	0.53	L-Jun.2024	1.0
Recreation commodities ¹¹	1.818	0.4	0.007	0.24	L-Jan.2024	0.8
Video and audio products ¹¹	0.247	1.0	0.002	0.36	L-Oct.2024	1.0
Televisions.....	0.086	-2.1	-0.002	0.61	S-Jan.2025	-2.1
Other video equipment ⁵	0.029	-1.8	-0.001	1.17	S-Aug.2023	-3.9
Audio equipment ⁴	0.053	8.8	0.005	0.87	L-EVER	—
Recorded music and music subscriptions ^{4, 5}	0.075	0.2	0.000	0.66	S-Feb.2025	0.0

See footnotes at end of table.

Table 6. Consumer Price Index for All Urban Consumers (CPI-U): U.S. city average, by expenditure category, April 2025, 1-month analysis table — Continued
 [1982-84=100, unless otherwise noted]

Expenditure category	Relative importance Mar. 2025	One Month				
		Seasonally adjusted percent change Mar. 2025-Apr. 2025	Seasonally adjusted effect on All Items Mar. 2025-Apr. 2025 ¹	Standard error, median price change ²	Largest (L) or Smallest (S) seasonally adjusted change since: ³	
					Date	Percent change
Pets and pet products ⁴	0.624	0.3	0.002	0.34	L-Jan.2025	0.3
Pet food and treats ^{4, 5, 6}		-0.1		0.37	L-Feb.2025	0.6
Purchase of pets, pet supplies, accessories ^{4, 5, 6}		1.2		0.75	L-Nov.2024	1.3
Sporting goods ⁴	0.462	0.6	0.003	0.50	L-Apr.2024	0.9
Sports vehicles including bicycles ⁴	0.225	1.8	0.004	0.74	L-Jan.2024	2.8
Sports equipment ⁴	0.221	-0.6	-0.001	0.52	S-Nov.2024	-0.7
Photographic equipment and supplies.....	0.019	2.2	0.000	0.68	L-Oct.2023	6.2
Photographic equipment ^{4, 5, 6}		1.0		1.03	L-Jan.2025	2.4
Recreational reading materials ⁴	0.101	-1.0	-0.001	1.41	S-Nov.2024	-4.9
Newspapers and magazines ^{4, 5}	0.056	-2.3	-0.001	1.46	S-Nov.2024	-5.6
Recreational books ^{4, 5}	0.045	0.7	0.000	2.14	L-Jan.2025	3.0
Other recreational goods ⁵	0.365	0.2	0.001	0.53	L-Jan.2025	0.5
Toys.....	0.286	0.3	0.001	0.65	L-Jan.2025	0.8
Toys, games, hobbies and playground equipment ^{5, 6}		-0.3		0.90	L-Jan.2025	1.7
Sewing machines, fabric and supplies ^{4, 5}	0.022	-1.0	0.000	1.12	L-Feb.2025	0.0
Music instruments and accessories ^{4, 5}	0.043	0.3	0.000	0.71	S-Feb.2025	-0.2
Education and communication commodities ¹¹	0.743	0.3	0.002	0.64	S-Feb.2025	-0.2
Educational books and supplies ⁴	0.042	-0.2	0.000	0.88	S-Dec.2024	-0.8
College textbooks ^{4, 6, 14}		-0.2		1.17	S-Dec.2024	-1.1
Information technology commodities ¹¹	0.701	0.3	0.002	0.70	S-Feb.2025	-0.2
Computers, peripherals, and smart home assistants ^{4, 7}	0.264	0.7	0.002	0.83	L-Feb.2025	0.7
Computer software and accessories ^{4, 5}	0.028	3.2	0.001	1.62	L-Feb.2025	3.3
Telephone hardware, calculators, and other consumer information items ⁵	0.409	-0.1	0.000	0.88	S-Feb.2025	-0.9
Smartphones ^{4, 6, 15}		-0.6		0.93	L-Jan.2025	-0.5
Alcoholic beverages ⁴	0.833	0.0	0.000	0.14	S-Dec.2024	-0.3
Alcoholic beverages at home.....	0.448	-0.1	0.000	0.18	S-Nov.2024	-0.3
Beer, ale, and other malt beverages at home ⁴	0.153	0.1	0.000	0.24	L-Feb.2025	0.6
Distilled spirits at home ⁴	0.102	0.6	0.001	0.36	S-Feb.2025	-0.4
Whiskey at home ^{4, 6}		0.5		0.66	S-Feb.2025	-0.6
Distilled spirits, excluding whiskey, at home ^{4, 6}		0.7		0.50	S-Feb.2025	0.0
Wine at home.....	0.193	-0.8	-0.002	0.29	S-Feb.2021	-0.8
Alcoholic beverages away from home ⁴	0.385	0.2	0.001	0.20	L-Feb.2025	0.5
Beer, ale, and other malt beverages away from home ^{4, 5, 6}		-0.1		0.21	S-Dec.2024	-1.2
Wine away from home ^{4, 5, 6}		0.6		0.20	L-Sep.2023	1.2
Distilled spirits away from home ^{4, 5, 6}		-0.2		0.25	S-Dec.2024	-0.7
Other goods ¹¹	1.291	0.3	0.004	0.24	—	—
Tobacco and smoking products ⁴	0.483	0.3	0.001	0.22	S-Dec.2024	0.0
Cigarettes ^{4, 5}	0.363	0.6	0.002	0.25	—	—
Tobacco products other than cigarettes ^{4, 5}	0.115	-0.7	-0.001	0.70	S-Jul.2024	-1.0
Personal care products ⁴	0.649	0.1	0.001	0.37	L-Feb.2025	0.9
Hair, dental, shaving, and miscellaneous personal care products ^{4, 5}	0.291	-0.3	-0.001	0.43	S-Dec.2024	-1.0
Cosmetics, perfume, bath, nail preparations and implements ⁴	0.349	0.5	0.002	0.58	L-Jan.2025	0.6
Miscellaneous personal goods ⁵	0.159	1.2	0.002	0.76	L-Feb.2025	1.4
Stationery, stationery supplies, gift wrap ⁶		-0.8		0.74	S-Apr.2024	-1.1
Services less energy services.....	60.640	0.3	0.175	0.07	L-Feb.2025	0.3
Shelter.....	35.426	0.3	0.119	0.09	L-Feb.2025	0.3
Rent of shelter ¹⁶	35.014	0.4	0.137	0.09	L-Jan.2025	0.4
Rent of primary residence.....	7.463	0.3	0.025	0.04	—	—

See footnotes at end of table.

Table 6. Consumer Price Index for All Urban Consumers (CPI-U): U.S. city average, by expenditure category, April 2025, 1-month analysis table — Continued
 [1982-84=100, unless otherwise noted]

Expenditure category	Relative importance Mar. 2025	One Month				
		Seasonally adjusted percent change Mar. 2025-Apr. 2025	Seasonally adjusted effect on All Items Mar. 2025-Apr. 2025 ¹	Standard error, median price change ²	Largest (L) or Smallest (S) seasonally adjusted change since: ³	
					Date	Percent change
Lodging away from home ⁵	1.375	-0.1	-0.001	1.69	L-Feb.2025	0.2
Housing at school, excluding board ¹⁶	0.241	0.3	0.001	0.07	—	—
Other lodging away from home including hotels and motels.....	1.134	-0.2	-0.002	2.00	L-Feb.2025	0.2
Owners' equivalent rent of residences ¹⁶	26.176	0.4	0.093	0.05	—	—
Owners' equivalent rent of primary residence ¹⁶ ..	24.983	0.4	0.089	0.05	—	—
Tenants' and household insurance ^{4, 5}	0.411	0.3	0.001	0.23	L-Feb.2025	0.8
Water and sewer and trash collection services ⁵	1.085	0.3	0.003	0.11	L-Feb.2025	1.0
Water and sewerage maintenance ⁴	0.740	0.3	0.003	0.13	—	—
Garbage and trash collection ^{4, 13}	0.344	0.2	0.001	0.15	L-Feb.2025	1.9
Household operations ^{4, 5}						
Domestic services ^{4, 5}						
Gardening and lawncare services ^{4, 5}						
Moving, storage, freight expense ⁵	0.124	-0.8	-0.001	0.61	S-Jan.2025	-0.9
Repair of household items ^{4, 5}						
Medical care services.....	6.736	0.5	0.034	0.17	—	—
Professional services.....	3.666	0.4	0.016	0.21	L-Nov.2024	0.4
Physicians' services ⁴	1.814	0.3	0.006	0.36	—	—
Dental services.....	0.927	0.5	0.005	0.24	L-May 2024	0.7
Eyeglasses and eye care ^{4, 9}	0.333	-0.4	-0.001	0.28	S-Aug.2024	-0.5
Services by other medical professionals ^{4, 9}	0.592	0.6	0.003	0.21	L-Sep.2024	1.5
Hospital and related services ⁴	2.276	0.5	0.012	0.25	S-Feb.2025	0.2
Hospital services ^{4, 17}	1.949	0.6	0.011	0.26	S-Feb.2025	0.1
Inpatient hospital services ^{4, 6, 17}		0.4		0.34	S-Feb.2025	0.2
Outpatient hospital services ^{4, 6, 9}		0.7		0.26	—	—
Nursing homes and adult day services ¹⁷	0.166	0.3	0.000	0.19	S-Jan.2025	-0.8
Care of invalids and elderly at home ^{4, 8}						
Health insurance ^{4, 8}	0.793	0.4	0.003	0.19	—	—
Transportation services.....	6.270	0.1	0.009	0.21	L-Jan.2025	1.8
Leased cars and trucks ^{4, 14}	0.388		0.004	0.63	—	—
Car and truck rental ⁵	0.127	4.3	0.006	1.18	L-Mar.2022	7.2
Motor vehicle maintenance and repair ⁴	1.022	0.7	0.007	0.26	S-Feb.2025	0.3
Motor vehicle body work ⁴						
Motor vehicle maintenance and servicing ⁴	0.506	0.2	0.001	0.30	—	—
Motor vehicle repair ^{4, 5}	0.402	1.2	0.005	0.48	S-Feb.2025	0.7
Motor vehicle insurance.....	2.829	0.6	0.018	0.31	L-Jan.2025	2.0
Motor vehicle fees ^{4, 5}	0.499	0.1	0.000	0.24	L-Jan.2025	2.6
State motor vehicle registration and license fees ^{4, 5}	0.281	0.3	0.001	0.09	L-Feb.2025	0.3
Parking and other fees ^{4, 5}	0.204	-0.1	0.000	0.53	L-Jan.2025	6.4
Parking fees and tolls ^{5, 6}		1.5		0.34	L-Apr.2024	2.2
Public transportation.....	1.405	-1.8	-0.026	0.55	L-Jan.2025	0.7
Airline fares.....	0.872	-2.8	-0.025	0.77	L-Jan.2025	1.2
Other intercity transportation.....	0.209	0.2	0.000	1.03	S-Feb.2025	-3.0
Ship fare ^{4, 5, 6}		-0.8		1.04	S-Feb.2025	-1.2
Intracity transportation ⁴	0.320	-0.2	-0.001	0.62	S-Feb.2025	-0.6
Intracity mass transit ^{4, 6, 11}		-0.1		0.09	S-Jan.2024	-0.4
Recreation services ¹¹	3.496	-0.3	-0.010	0.22	S-Sep.2024	-0.3
Video and audio services ¹¹	0.826	-0.6	-0.005	0.24	L-Feb.2025	1.0
Cable, satellite, and live streaming television service ¹³	0.665	-0.4	-0.003	0.20	L-Feb.2025	0.7
Purchase, subscription, and rental of video ^{4, 5}	0.161	-1.5	-0.002	0.99	S-Nov.2024	-2.1
Video discs and other media ^{4, 5, 6}		-1.2		1.92	L-Feb.2025	1.0

See footnotes at end of table.

Table 6. Consumer Price Index for All Urban Consumers (CPI-U): U.S. city average, by expenditure category, April 2025, 1-month analysis table — Continued
 [1982-84=100, unless otherwise noted]

Expenditure category	Relative importance Mar. 2025	One Month				
		Seasonally adjusted percent change Mar. 2025-Apr. 2025	Seasonally adjusted effect on All Items Mar. 2025-Apr. 2025 ¹	Standard error, median price change ²	Largest (L) or Smallest (S) seasonally adjusted change since: ³	
					Date	Percent change
Subscription and rental of video and video games ^{4, 5, 6}		-0.7		0.47	S-Nov.2024	-1.8
Pet services including veterinary ⁵	0.536	0.0	0.000	0.32	L-Feb.2025	1.1
Pet services ^{5, 6}		1.1		0.50	L-Nov.2024	1.4
Veterinarian services ^{4, 5, 6}		0.2		0.63	S-Sep.2024	0.1
Photographers and photo processing ^{4, 5}						
Other recreation services ⁵	2.078	-0.2	-0.005	0.38	S-Sep.2024	-0.5
Club membership for shopping clubs, fraternal, or other organizations, or participant sports fees ⁵	0.818	0.1	0.001	0.17	S-Dec.2024	-0.6
Admissions ⁴	0.760	-0.5	-0.003	0.71	S-Aug.2024	-0.8
Admission to movies, theaters, and concerts ^{4, 5, 6}				0.55	L-Nov.2023	1.5
Admission to sporting events ^{4, 5, 6}		-12.2		1.75	S-EVER	—
Fees for lessons or instructions ^{4, 9}	0.167	-1.2	-0.002	0.34	S-Feb.2024	-1.5
Education and communication services ¹¹	4.949	-0.2	-0.010	0.08	S-Nov.2024	-0.2
Tuition, other school fees, and childcare.....	2.517	0.1	0.004	0.06	S-Nov.2023	0.1
College tuition and fees.....	1.303	0.2	0.002	0.08	—	—
Elementary and high school tuition and fees.....	0.385	0.3	0.001	0.09	S-Dec.2024	0.3
Day care and preschool ^{4, 12}	0.724	0.0	0.000	0.14	S-Dec.2024	-0.1
Technical and business school tuition and fees ⁵	0.039	-0.1	0.000	0.07	S-Oct.2024	-0.1
Postage and delivery services ⁵	0.053	0.4	0.000	0.07	—	—
Postage.....	0.051	0.4	0.000	0.00	—	—
Delivery services ⁵	0.002	0.8	0.000	0.33	L-Feb.2025	1.3
Telephone services ^{4, 5}	1.434	0.0	0.000	0.06	L-Feb.2025	0.1
Wireless telephone services ^{4, 5}	1.262	0.1	0.001	0.06	L-Sep.2024	0.1
Residential telephone services ^{4, 11}	0.172	-0.7	-0.001	0.30	S-Oct.2024	-2.2
Internet services and electronic information providers ^{4, 5}	0.937	-1.5	-0.014	0.23	S-Nov.2024	-1.6
Other personal services ^{4, 11}	1.648	0.2	0.004	0.16	S-Jan.2025	-0.5
Personal care services ⁴	0.657	0.1	0.001	0.24	—	—
Haircuts and other personal care services ^{4, 5}	0.657	0.1	0.001	0.24	—	—
Miscellaneous personal services ⁴	0.990	0.3	0.003	0.15	S-Jan.2025	-1.2
Legal services ^{4, 9}						
Funeral expenses ^{4, 9}	0.141	0.2	0.000	0.24	S-Jan.2025	0.2
Laundry and dry cleaning services ^{4, 5}	0.163	0.2	0.000	0.27	L-Feb.2025	0.5
Apparel services other than laundry and dry cleaning ^{4, 5}	0.027	-2.6	-0.001	0.68	S-May 2022	-2.6
Financial services ^{4, 9}	0.250	1.3	0.003	0.42	S-Jan.2025	-4.7
Checking account and other bank services ^{4, 5, 6}		0.0		0.00	—	—
Tax return preparation and other accounting fees ^{4, 5, 6}		1.9		0.96	S-Sep.2024	0.6
Special aggregate indexes						
All items less food.....	86.319	0.3	0.232	0.05	L-Jan.2025	0.5
All items less shelter.....	64.574	0.2	0.102	0.05	L-Feb.2025	0.2
All items less food and shelter.....	50.894	0.2	0.113	0.05	L-Feb.2025	0.2
All items less food, shelter, and energy.....	44.582	0.2	0.071	0.06	L-Feb.2025	0.2
All items less food, shelter, energy, and used cars and trucks.....	42.201	0.2	0.084	0.06	L-Jan.2025	0.4
All items less medical care.....	91.755	0.2	0.180	0.05	L-Feb.2025	0.2
All items less energy.....	93.688	0.2	0.179	0.05	L-Feb.2025	0.2
Commodities.....	36.199	0.0	-0.006	0.05	L-Feb.2025	0.1

See footnotes at end of table.

Table 6. Consumer Price Index for All Urban Consumers (CPI-U): U.S. city average, by expenditure category, April 2025, 1-month analysis table — Continued
 [1982-84=100, unless otherwise noted]

Expenditure category	Relative importance Mar. 2025	One Month				
		Seasonally adjusted percent change Mar. 2025-Apr. 2025	Seasonally adjusted effect on All Items Mar. 2025-Apr. 2025 ¹	Standard error, median price change ²	Largest (L) or Smallest (S) seasonally adjusted change since: ³	
					Date	Percent change
Commodities less food, energy, and used cars and trucks.....	16.987	0.1	0.025	0.10	L-Feb.2025	0.1
Commodities less food.....	22.518	0.0	0.005	0.07	L-Feb.2025	0.1
Commodities less food and beverages.....	21.685	0.0	0.005	0.07	L-Feb.2025	0.0
Services.....	63.801	0.4	0.225	0.07	L-Jan.2025	0.5
Services less rent of shelter ¹⁶	28.787	0.3	0.085	0.07	—	—
Services less medical care services.....	57.066	0.3	0.153	0.07	L-Feb.2025	0.3
Durables.....	10.891	0.2	0.018	0.09	L-Jan.2025	0.4
Nondurables.....	25.308	-0.1	-0.015	0.07	L-Feb.2025	0.0
Nondurables less food.....	11.627	-0.1	-0.017	0.11	L-Jan.2025	0.5
Nondurables less food and beverages.....	10.794	-0.1	-0.016	0.12	L-Jan.2025	0.5
Nondurables less food, beverages, and apparel.....	8.218	-0.1	-0.010	0.11	L-Jan.2025	1.0
Nondurables less food and apparel.....	9.050	-0.1	-0.012	0.10	L-Jan.2025	0.9
Housing.....	44.217	0.5	0.210	0.08	L-Jan.2024	0.6
Education and communication ⁵	5.692	-0.1	-0.007	0.12	S-Nov.2024	-0.3
Education ⁵	2.559	0.1	0.004	0.06	S-Nov.2023	0.1
Communication ⁵	3.133	-0.4	-0.011	0.17	S-Nov.2024	-0.9
Information and information processing ⁵	3.080	-0.4	-0.011	0.18	S-Nov.2024	-0.9
Information technology, hardware and services ¹⁸	1.646	-0.7	-0.011	0.33	S-Nov.2024	-1.6
Recreation ⁵	5.313	0.0	-0.003	0.19	L-Feb.2025	0.3
Video and audio ⁵	1.073	-0.3	-0.003	0.21	L-Feb.2025	0.6
Pets, pet products and services ⁵	1.160	0.2	0.002	0.25	L-Feb.2025	0.5
Photography ⁵	0.075	0.5	0.000	0.53	L-Feb.2025	0.8
Food and beverages.....	14.513	-0.1	-0.011	0.07	S-Jul.2020	-0.4
Domestically produced farm food ⁴	6.796	-0.5	-0.033	0.14	S-Nov.2023	-0.5
Other services.....	10.092	-0.2	-0.016	0.10	S-Jan.2021	-0.3
Apparel less footwear.....	1.993	-0.1	-0.002	0.41	S-Jan.2025	-1.6
Fuels and utilities.....	4.388	1.1	0.049	0.19	—	—
Household energy.....	3.303	1.4	0.046	0.25	—	—
Medical care.....	8.245	0.5	0.040	0.14	L-May 2024	0.5
Transportation.....	16.503	0.0	-0.007	0.10	L-Jan.2025	1.2
Private transportation.....	15.098	0.1	0.018	0.10	L-Jan.2025	1.2
New and used motor vehicles ⁵	7.381	0.0	-0.003	0.06	L-Feb.2025	0.1
Utilities and public transportation.....	7.750	0.1	0.007	0.15	S-Feb.2025	0.1
Household furnishings and operations.....	4.403	1.0	0.042	0.17	L-Jan.2022	1.1
Other goods and services.....	2.939	0.1	0.004	0.15	S-Jan.2025	-0.3
Personal care.....	2.455	0.1	0.002	0.15	S-Jan.2025	-0.5

¹ The 'effect' of an item category is a measure of that item's contribution to the All items price change. For example, if the Food index had an effect of 0.40, and the All items index rose 1.2 percent, then the increase in food prices contributed 0.40 / 1.2, or 33.3 percent, to that All items increase. Said another way, had food prices been unchanged for that month the change in the All items index would have been 1.2 percent minus 0.40, or 0.8 percent. Effects can be negative as well. For example, if the effect of food was a negative 0.1, and the All items index rose 0.5 percent, the All items index actually would have been 0.1 percent higher (or 0.6 percent) had food prices been unchanged. Since food prices fell while prices overall were rising, the contribution of food to the All items price change was negative (in this case, -0.1 / 0.5, or minus 20 percent).

² A statistic's margin of error is often expressed as its point estimate plus or minus two standard errors. For example, if a CPI category rose 0.6 percent, and its standard error was 0.15 percent, the margin of error on this item's 1-month percent change would be 0.6 percent, plus or minus 0.3 percent.

³ If the current seasonally adjusted 1-month percent change is greater than the previous published 1-month percent change, then this column identifies the closest prior month with a 1-month percent change as (L)arge as or (L)arger than the current 1-month change. If the current 1-month percent change is smaller than the previous published 1-month percent change, the most recent month with a change as (S)mall or (S)maller than the current month change is identified. If the current and previous published 1-month percent changes are equal, a dash will appear. Standard numerical comparisons are used. For example, 0.8% is greater than 0.6%, -0.4% is less than -0.2%, and -0.2% is less than 0.0%. Note that a (L)arger change can be a smaller decline, for example, a -0.2% change is larger than a -0.4% change, but still represents a decline in the price index. Likewise, (S)maller changes can be increases, for example, a 0.6% change is smaller than 0.8%, but still represents an increase in the price index. In this context, a -0.2% change is considered to be smaller than a 0.0% change.

⁴ Not seasonally adjusted.

⁵ Indexes on a December 1997=100 base.

⁶ Special indexes based on a substantially smaller sample. These series do not contribute to the all items index aggregation and therefore do not have a relative importance or effect.

- ⁷ Indexes on a December 2007=100 base.
- ⁸ Indexes on a December 2005=100 base.
- ⁹ Indexes on a December 1986=100 base.
- ¹⁰ Indexes on a December 1993=100 base.
- ¹¹ Indexes on a December 2009=100 base.
- ¹² Indexes on a December 1990=100 base.
- ¹³ Indexes on a December 1983=100 base.
- ¹⁴ Indexes on a December 2001=100 base.
- ¹⁵ Indexes on a December 2019=100 base.
- ¹⁶ Indexes on a December 1982=100 base.
- ¹⁷ Indexes on a December 1996=100 base.
- ¹⁸ Indexes on a December 1988=100 base.

Table 7. Consumer Price Index for All Urban Consumers (CPI-U): U.S. city average, by expenditure category, April 2025, 12-month analysis table
 [1982-84=100, unless otherwise noted]

Expenditure category	Relative importance Mar. 2025	Twelve Month				
		Unadjusted percent change Apr. 2024-Apr. 2025	Unadjusted effect on All Items Apr. 2024-Apr. 2025 ¹	Standard error, median price change ²	Largest (L) or Smallest (S) unadjusted change since: ³	
					Date	Percent change
All items.....	100.000	2.3		0.11	S-Feb.2021	1.7
Food.....	13.681	2.8	0.372	0.13	S-Feb.2025	2.6
Food at home.....	8.051	2.0	0.161	0.18	S-Feb.2025	1.9
Cereals and bakery products.....	1.101	0.0	0.000	0.43	S-Nov.2024	-0.5
Cereals and cereal products.....	0.336	-2.5	-0.009	0.77	S-Nov.2010	-2.6
Flour and prepared flour mixes.....	0.030	0.6	0.000	1.21	S-Dec.2024	0.4
Breakfast cereal.....	0.146	-2.6	-0.004	1.66	S-Feb.2018	-3.1
Rice, pasta, cornmeal.....	0.159	-2.6	-0.004	0.82	S-Aug.2024	-2.7
Rice ^{4, 5}		-2.7		1.28	S-Aug.2024	-3.1
Bakery products.....	0.765	1.2	0.009	0.48	-	-
Bread ⁴	0.139	1.9	0.004	0.75	L-Jan.2024	3.2
White bread ⁵		1.6		1.19	L-Feb.2024	1.7
Bread other than white ⁵		1.9		1.00	L-May 2024	2.7
Fresh biscuits, rolls, muffins ⁴	0.136	3.1	0.004	1.27	L-Feb.2025	3.4
Cakes, cupcakes, and cookies.....	0.212	1.5	0.003	0.86	L-Nov.2024	1.5
Cookies ⁵		1.7		1.10	L-Jan.2025	3.1
Fresh cakes and cupcakes ⁵		2.1		1.16	L-Dec.2023	3.8
Other bakery products.....	0.279	-0.6	-0.001	0.94	S-Nov.2024	-1.2
Fresh sweetrolls, coffeecakes, doughnuts ⁵		4.2		1.74	S-Jan.2025	3.5
Crackers, bread, and cracker products ⁵		-0.8		1.63	S-Feb.2025	-0.9
Frozen and refrigerated bakery products, pies, tarts, turnovers ⁵		-3.2		1.11	S-EVER	-
Meats, poultry, fish, and eggs.....	1.669	7.0	0.115	0.38	S-Jan.2025	6.1
Meats, poultry, and fish.....	1.450	3.4	0.051	0.37	L-Feb.2023	3.8
Meats.....	0.926	4.4	0.043	0.47	S-Feb.2025	3.8
Beef and veal.....	0.456	8.5	0.037	0.69	S-Feb.2025	7.6
Uncooked ground beef.....	0.208	10.0	0.018	1.04	S-Feb.2025	7.8
Uncooked beef roasts ⁴	0.057	8.8	0.006	1.53	S-Jan.2025	7.5
Uncooked beef steaks ⁴	0.130	7.0	0.010	1.11	L-Mar.2024	7.2
Uncooked other beef and veal ⁴	0.061	7.7	0.004	1.34	L-Feb.2025	9.5
Pork.....	0.288	1.3	0.004	0.95	S-Oct.2024	-0.6
Bacon, breakfast sausage, and related products ⁴	0.103	1.5	0.002	1.41	S-Nov.2024	-0.4
Bacon and related products ⁵		3.9		1.89	S-Feb.2025	2.7
Breakfast sausage and related products ^{4, 5}		-1.1		1.76	S-Mar.2024	-4.0
Ham.....	0.044	4.3	0.002	1.90	S-Feb.2025	0.4
Ham, excluding canned ⁵		4.7		1.97	L-Jul.2023	6.1
Pork chops.....	0.049	0.6	0.000	2.08	S-Oct.2024	-0.9
Other pork including roasts, steaks, and ribs ⁴	0.092	0.0	0.000	2.05	S-Feb.2024	-0.6
Other meats.....	0.181	0.4	0.001	0.88	L-Sep.2024	0.8
Frankfurters ⁵		-4.3		2.78	S-Aug.2021	-6.4
Lunchmeats ^{4, 5}		-0.2		1.11	L-Dec.2024	-0.2
Poultry.....	0.286	2.4	0.007	0.80	L-Apr.2023	5.0
Chicken ⁴	0.214	2.7	0.006	0.85	L-Apr.2023	3.4
Fresh whole chicken ⁵		2.1		1.48	L-Feb.2025	2.1
Fresh and frozen chicken parts ⁵		2.8		1.08	L-Apr.2023	2.8
Other uncooked poultry including turkey ⁴	0.071	0.7	0.001	1.96	L-Apr.2024	1.7
Fish and seafood.....	0.238	0.7	0.002	0.81	L-Feb.2025	1.8
Fresh fish and seafood ⁴	0.140	1.0	0.002	1.17	L-Feb.2025	1.1
Processed fish and seafood ⁴	0.098	-0.1	0.000	1.10	L-Feb.2025	2.2
Shelf stable fish and seafood ⁵		-1.7		1.78	L-Feb.2025	-0.3
Frozen fish and seafood ⁵		3.1		1.93	L-Feb.2025	5.9
Eggs.....	0.219	49.3	0.063	1.83	S-Dec.2024	36.8

See footnotes at end of table.

Table 7. Consumer Price Index for All Urban Consumers (CPI-U): U.S. city average, by expenditure category, April 2025, 12-month analysis table — Continued
 [1982-84=100, unless otherwise noted]

Expenditure category	Relative importance Mar. 2025	Twelve Month				
		Unadjusted percent change Apr. 2024-Apr. 2025	Unadjusted effect on All Items Apr. 2024-Apr. 2025 ¹	Standard error, median price change ²	Largest (L) or Smallest (S) unadjusted change since: ³	
					Date	Percent change
Dairy and related products.....	0.734	1.6	0.012	0.45	S-Feb.2025	0.8
Milk ⁴	0.197	3.9	0.007	0.70	L-Mar.2023	5.5
Fresh whole milk ⁵		3.5		0.75	L-Mar.2023	4.3
Fresh milk other than whole ^{4, 5}		4.1		0.86	L-Mar.2023	6.5
Cheese and related products.....	0.254	2.1	0.005	0.86	S-Feb.2025	0.0
Ice cream and related products.....	0.129	-2.8	-0.003	1.19	S-Jun.2005	-2.9
Other dairy and related products ⁴	0.154	1.6	0.003	0.80	S-Feb.2025	1.5
Fruits and vegetables.....	1.307	-0.9	-0.012	0.48	S-Mar.2020	-1.9
Fresh fruits and vegetables.....	1.084	-0.7	-0.008	0.60	L-Feb.2025	-0.3
Fresh fruits.....	0.556	1.5	0.008	0.84	L-Feb.2025	1.9
Apples.....	0.081	6.8	0.005	1.37	L-Aug.2023	8.5
Bananas.....	0.108	0.0	0.001	1.14	L-Jan.2025	0.2
Citrus fruits ⁴	0.062	-0.7	0.000	1.56	S-Dec.2024	-1.5
Oranges, including tangerines ⁵		-0.2		2.38	S-Dec.2024	-0.8
Other fresh fruits ⁴	0.304	1.3	0.003	1.75	S-Dec.2024	0.7
Fresh vegetables.....	0.528	-2.9	-0.017	0.83	L-Feb.2025	-2.5
Potatoes.....	0.083	-0.5	0.000	1.54	L-Dec.2024	0.6
Lettuce.....	0.066	-6.4	-0.005	2.36	S-Jan.2024	-11.7
Tomatoes.....	0.086	-6.4	-0.006	1.81	L-Jan.2025	-4.4
Other fresh vegetables.....	0.294	-1.6	-0.006	1.17	S-Feb.2025	-1.9
Processed fruits and vegetables ⁴	0.223	-0.6	-0.003	0.63	S-Jul.2018	-1.0
Canned fruits and vegetables ⁴	0.090	0.2	-0.001	0.81	S-Dec.2024	-0.7
Canned fruits ^{4, 5}		1.2		1.45	S-Dec.2024	-0.1
Canned vegetables ^{4, 5}		-0.2		0.87	S-Dec.2024	-0.5
Frozen fruits and vegetables ⁴	0.068	-2.1	-0.003	1.54	S-Jan.2025	-2.5
Frozen vegetables ⁵		-3.7		1.67	S-Jun.2018	-4.5
Other processed fruits and vegetables including dried ⁴	0.065	0.8	0.001	1.26	S-Feb.2024	0.4
Dried beans, peas, and lentils ^{4, 5}		5.6		2.29	L-Jan.2025	5.6
Nonalcoholic beverages and beverage materials.....	0.909	3.2	0.029	0.62	L-Jan.2024	3.4
Juices and nonalcoholic drinks ⁴	0.641	1.8	0.011	0.83	L-Jan.2025	1.9
Carbonated drinks.....	0.353	0.7	0.003	1.28	S-Feb.2025	0.5
Frozen noncarbonated juices and drinks ⁴	0.004	5.7	0.000	3.05	S-Oct.2022	5.1
Nonfrozen noncarbonated juices and drinks ⁴	0.285	2.1	0.007	0.98	L-Jan.2025	2.1
Beverage materials including coffee and tea ⁴	0.268	6.6	0.018	0.99	L-Apr.2023	7.2
Coffee.....	0.138	9.6	0.014	1.16	L-Mar.2023	10.3
Roasted coffee ⁵		9.1		1.42	L-Mar.2023	10.4
Instant coffee ⁵		13.5		1.82	L-Nov.2022	13.9
Other beverage materials including tea ⁴	0.130	3.0	0.004	1.58	L-Jan.2025	3.7
Other food at home.....	2.331	0.7	0.018	0.34	S-Feb.2025	0.1
Sugar and sweets.....	0.333	3.6	0.011	0.77	—	—
Sugar and sugar substitutes.....	0.028	1.7	0.000	1.19	S-May 2021	1.7
Candy and chewing gum ⁴	0.233	6.3	0.013	1.11	L-Sep.2023	7.5
Other sweets ⁴	0.072	-2.8	-0.002	1.18	S-EVER	—
Fats and oils.....	0.249	-1.6	-0.004	0.86	S-Apr.2019	-2.0
Butter and margarine ⁴	0.056	0.4	0.000	1.15	S-Jan.2025	0.3
Butter ⁵		1.5		1.57	S-Mar.2024	-0.5
Margarine ⁵		2.6		1.72	L-Aug.2023	3.9
Salad dressing ⁴	0.065	-0.9	-0.001	1.73	S-Feb.2025	-1.8
Other fats and oils including peanut butter ⁴	0.128	-2.7	-0.003	1.46	S-Apr.2019	-2.9
Peanut butter ^{4, 5}		-2.6		1.63	S-Feb.2025	-4.8
Other foods.....	1.750	0.5	0.010	0.40	S-Feb.2025	-0.3
Soups.....	0.106	1.3	0.002	1.56	L-Oct.2024	1.4
Frozen and freeze dried prepared foods.....	0.271	1.5	0.004	0.92	L-Sep.2023	2.9

See footnotes at end of table.

Table 7. Consumer Price Index for All Urban Consumers (CPI-U): U.S. city average, by expenditure category, April 2025, 12-month analysis table — Continued
 [1982-84=100, unless otherwise noted]

Expenditure category	Relative importance Mar. 2025	Twelve Month				
		Unadjusted percent change Apr. 2024-Apr. 2025	Unadjusted effect on All Items Apr. 2024-Apr. 2025 ¹	Standard error, median price change ²	Largest (L) or Smallest (S) unadjusted change since: ³	
					Date	Percent change
Snacks.....	0.369	-0.1	0.000	1.04	L-Jun.2024	0.7
Spices, seasonings, condiments, sauces.....	0.388	0.3	0.002	0.76	S-Aug.2021	0.0
Salt and other seasonings and spices ^{4, 5}		-4.9		1.23	S-EVER	-
Olives, pickles, relishes ^{4, 5}		3.0		1.79	L-Feb.2025	8.0
Sauces and gravies ^{4, 5}		1.5		1.26	S-Feb.2025	0.4
Other condiments ⁵		10.3		2.48	L-Jan.2025	10.3
Baby food and formula ⁴	0.060	1.2	0.001	1.47	L-Dec.2024	2.1
Other miscellaneous foods ⁴	0.556	0.4	0.002	0.80	S-Feb.2025	-0.4
Prepared salads ^{5, 6}		4.6		1.20	L-Apr.2023	9.2
Food away from home.....	5.629	3.9	0.211	0.17	L-Sep.2024	3.9
Full service meals and snacks ⁴	2.429	4.3	0.104	0.27	L-Jan.2024	4.3
Limited service meals and snacks ⁴	2.832	3.4	0.088	0.24	-	-
Food at employee sites and schools ⁴	0.071	3.7	0.003	1.01	S-Dec.2024	3.7
Food at elementary and secondary schools ^{5, 7}		3.3		0.76	-	-
Food from vending machines and mobile vendors ⁴	0.056	6.5	0.003	1.42	S-Feb.2025	3.9
Other food away from home ⁴	0.241	4.8	0.012	0.55	L-Feb.2025	5.1
Energy.....	6.312	-3.7	-0.273	0.46	S-Oct.2024	-4.9
Energy commodities.....	3.151	-11.5	-0.462	0.39	S-Oct.2024	-12.4
Fuel oil and other fuels.....	0.142	-7.2	-0.011	1.05	S-Nov.2024	-10.7
Fuel oil.....	0.077	-9.6	-0.008	1.00	S-Dec.2024	-13.1
Propane, kerosene, and firewood ⁸	0.065	-5.6	-0.004	1.38	S-Oct.2023	-6.4
Motor fuel.....	3.009	-11.7	-0.451	0.40	S-Oct.2024	-12.5
Gasoline (all types).....	2.927	-11.8	-0.440	0.41	S-Oct.2024	-12.2
Gasoline, unleaded regular ⁵		-12.3		0.86	S-Oct.2024	-12.4
Gasoline, unleaded midgrade ^{5, 9}		-10.1		0.91	S-Oct.2024	-11.1
Gasoline, unleaded premium ⁵		-9.1		0.97	S-Oct.2024	-11.1
Other motor fuels ⁴	0.082	-10.2	-0.011	0.56	S-Dec.2024	-13.5
Energy services.....	3.161	6.2	0.189	0.88	L-Mar.2023	9.2
Electricity.....	2.390	3.6	0.085	1.10	L-Oct.2024	4.5
Utility (piped) gas service.....	0.771	15.7	0.104	0.75	L-Jan.2023	26.7
All items less food and energy.....	80.007	2.8	2.212	0.14	-	-
Commodities less food and energy commodities.....	19.367	0.1	0.040	0.18	L-Dec.2023	0.2
Household furnishings and supplies ¹⁰	3.373	0.3	0.009	0.54	L-Oct.2023	0.7
Window and floor coverings and other linens ⁴	0.242	-1.5	-0.005	1.92	S-Oct.2024	-3.0
Floor coverings ⁴	0.058	-4.6	-0.003	3.63	S-Feb.2025	-5.6
Window coverings ⁴	0.054	0.0	0.000	3.66	S-Jan.2024	-0.6
Other linens ⁴	0.130	-0.8	-0.002	2.65	S-Jan.2025	-0.9
Furniture and bedding.....	0.783	0.2	-0.001	1.14	L-Mar.2023	2.1
Bedroom furniture.....	0.255	-1.2	-0.006	1.50	L-Jan.2024	-0.9
Living room, kitchen, and dining room furniture ⁴	0.380	3.3	0.012	1.50	L-Mar.2023	3.3
Other furniture ⁴	0.139	-5.8	-0.008	2.57	L-Sep.2024	-3.9
Appliances ⁴	0.217	-1.2	-0.003	1.45	L-Nov.2024	-1.0
Major appliances ⁴	0.069	-3.6	-0.002	1.76	L-Nov.2024	-0.2
Laundry equipment ⁵		4.0		2.51	S-Jan.2025	1.1
Other appliances ⁴	0.146	-0.1	0.000	1.95	L-Dec.2023	0.0
Other household equipment and furnishings ⁴	0.501	0.6	0.003	1.14	S-Jan.2025	0.3
Clocks, lamps, and decorator items.....	0.297	2.3	0.007	1.73	S-Jan.2025	1.5
Indoor plants and flowers ¹¹	0.114	0.8	0.001	2.36	S-Jul.2023	-0.1
Dishes and flatware ⁴	0.037	-8.7	-0.003	3.61	L-Nov.2024	-4.7
Nonelectric cookware and tableware ⁴	0.053	-1.9	-0.001	2.83	L-Jan.2025	-1.9
Tools, hardware, outdoor equipment and supplies ⁴	0.836	0.7	0.007	1.50	L-Dec.2023	0.9
Tools, hardware and supplies ⁴	0.239	0.3	0.001	1.24	L-Dec.2023	1.0
Outdoor equipment and supplies ⁴	0.363	1.0	0.003	2.29	L-Dec.2023	1.2

See footnotes at end of table.

Table 7. Consumer Price Index for All Urban Consumers (CPI-U): U.S. city average, by expenditure category, April 2025, 12-month analysis table — Continued
 [1982-84=100, unless otherwise noted]

Expenditure category	Relative importance Mar. 2025	Twelve Month				
		Unadjusted percent change Apr. 2024-Apr. 2025	Unadjusted effect on All Items Apr. 2024-Apr. 2025 ¹	Standard error, median price change ²	Largest (L) or Smallest (S) unadjusted change since: ³	
					Date	Percent change
Housekeeping supplies.....	0.793	1.0	0.008	0.58	S-Feb.2025	0.4
Household cleaning products ⁴	0.293	2.4	0.007	0.97	L-Aug.2024	2.5
Household paper products ⁴	0.175	0.0	0.000	0.92	S-Oct.2024	-0.1
Miscellaneous household products ⁴	0.324	0.4	0.002	0.95	S-Feb.2025	-0.4
Apparel.....	2.577	-0.7	-0.018	0.72	S-Mar.2021	-2.5
Men's and boys' apparel.....	0.686	1.1	0.008	1.19	S-Oct.2024	0.0
Men's apparel.....	0.557	0.7	0.006	1.35	S-Feb.2025	0.3
Men's suits, sport coats, and outerwear.....	0.095	5.3	0.005	4.19	L-Jan.2023	7.4
Men's underwear, nightwear, swimwear, and accessories.....	0.147	1.8	0.002	1.47	S-Feb.2025	-0.3
Men's shirts and sweaters ⁴	0.159	-4.1	-0.006	2.59	S-Mar.2021	-5.4
Men's pants and shorts.....	0.139	2.3	0.004	2.45	S-Feb.2025	2.1
Boys' apparel.....	0.130	1.7	0.002	2.44	S-Jul.2024	0.9
Women's and girls' apparel.....	1.016	-1.5	-0.017	1.27	S-Feb.2024	-1.5
Women's apparel.....	0.901	-1.1	-0.011	1.16	S-Mar.2021	-5.4
Women's outerwear.....	0.080	6.2	0.005	4.43	L-Sep.2023	7.4
Women's dresses.....	0.134	-5.1	-0.007	3.60	S-Mar.2021	-11.4
Women's suits and separates ⁴	0.370	-1.9	-0.012	1.71	S-Jan.2025	-2.2
Women's underwear, nightwear, swimwear, and accessories ⁴	0.305	0.9	0.003	1.78	S-Jan.2025	0.5
Girls' apparel.....	0.115	-3.8	-0.006	3.41	L-Feb.2025	4.6
Footwear.....	0.584	-1.3	-0.006	1.01	S-Jul.2023	-1.6
Men's footwear.....	0.201	-1.5	-0.003	1.51	S-Jun.2023	-1.6
Boys' and girls' footwear.....	0.111	-2.9	-0.003	2.10	S-Mar.2021	-4.7
Women's footwear.....	0.272	-0.6	0.000	1.58	S-Feb.2025	-0.6
Infants' and toddlers' apparel.....	0.103	-4.4	-0.004	2.49	S-Feb.2021	-6.8
Jewelry and watches ⁸	0.188	1.2	0.002	3.57	S-Jan.2025	-1.3
Watches ⁸	0.042	1.0	0.000	2.95	S-Aug.2024	0.1
Jewelry ⁸	0.146	1.6	0.001	4.04	S-Jan.2025	-1.8
Transportation commodities less motor fuel ¹⁰	7.224	0.8	0.059	0.13	L-Nov.2022	2.4
New vehicles.....	4.350	0.3	0.017	0.19	L-Feb.2024	0.4
New cars ⁵		0.8		0.20	L-Nov.2023	1.0
New trucks ^{5, 12}		0.3		0.18	L-Feb.2024	0.5
Used cars and trucks.....	2.380	1.5	0.036	0.11	L-Oct.2022	2.0
Motor vehicle parts and equipment.....	0.358	1.2	0.006	0.73	—	—
Tires.....	0.295	1.5	0.005	0.86	S-Feb.2025	1.0
Vehicle accessories other than tires ⁴	0.063	0.6	0.001	1.48	L-Feb.2025	1.7
Vehicle parts and equipment other than tires ⁵		0.3		1.81	L-Feb.2025	0.4
Motor oil, coolant, and fluids ⁵		-1.0		1.00	S-Jun.2024	-1.0
Medical care commodities.....	1.509	1.0	0.014	1.10	—	—
Medicinal drugs ¹⁰	1.333	1.1	0.015	1.18	S-Dec.2024	0.6
Prescription drugs.....	0.917	2.3	0.021	1.56	L-Feb.2025	4.6
Nonprescription drugs ¹⁰	0.416	-1.1	-0.005	1.54	S-Feb.2025	-1.1
Medical equipment and supplies ¹⁰	0.176	-0.5	-0.001	1.09	L-Jan.2025	-0.3
Recreation commodities ¹⁰	1.818	-1.8	-0.037	0.45	L-Dec.2024	-1.5
Video and audio products ¹⁰	0.247	-1.6	-0.005	1.01	L-Dec.2024	0.0
Televisions.....	0.086	-9.9	-0.011	1.17	S-Dec.2023	-10.3
Other video equipment ⁴	0.029	-3.9	-0.001	2.42	S-Feb.2025	-4.3
Audio equipment.....	0.053	6.0	0.003	2.33	L-EVER	—
Recorded music and music subscriptions ⁴	0.075	5.2	0.004	2.30	L-Jan.2025	5.6
Pets and pet products.....	0.624	-0.2	-0.001	1.10	L-Nov.2024	0.0
Pet food and treats ^{4, 5}		-0.6		1.31	L-Feb.2025	0.4
Purchase of pets, pet supplies, accessories ^{4, 5}		1.9		1.90	L-Nov.2024	2.8
Sporting goods.....	0.462	-5.2	-0.031	1.02	S-Feb.2025	-5.3

See footnotes at end of table.

Table 7. Consumer Price Index for All Urban Consumers (CPI-U): U.S. city average, by expenditure category, April 2025, 12-month analysis table — Continued
 [1982-84=100, unless otherwise noted]

Expenditure category	Relative importance Mar. 2025	Twelve Month				
		Unadjusted percent change Apr. 2024-Apr. 2025	Unadjusted effect on All Items Apr. 2024-Apr. 2025 ¹	Standard error, median price change ²	Largest (L) or Smallest (S) unadjusted change since: ³	
					Date	Percent change
Sports vehicles including bicycles.....	0.225	-6.6	-0.022	1.55	L-Jan.2025	-4.4
Sports equipment.....	0.221	-3.7	-0.008	1.17	S-May.2020	-3.8
Photographic equipment and supplies.....	0.019	1.2	0.000	3.36	L-Jan.2025	1.8
Photographic equipment ^{4, 5}		0.8		4.99	L-Jan.2025	1.3
Recreational reading materials.....	0.101	2.0	0.002	2.37	S-Feb.2025	2.0
Newspapers and magazines ⁴	0.056	2.9	0.002	2.97	S-Feb.2025	0.6
Recreational books ⁴	0.045	1.0	0.000	2.63	L-Feb.2025	3.7
Other recreational goods ⁴	0.365	-0.9	-0.003	1.02	L-Jun.2023	1.7
Toys.....	0.286	-1.4	-0.003	1.32	L-Jun.2023	1.1
Toys, games, hobbies and playground equipment ^{4, 5}		-1.3		1.90	S-Feb.2025	-1.9
Sewing machines, fabric and supplies ⁴	0.022	-2.6	-0.001	3.34	S-Jan.2025	-3.0
Music instruments and accessories ⁴	0.043	4.7	0.001	2.10	L-Oct.2023	7.2
Education and communication commodities ¹⁰	0.743	-5.3	-0.045	1.43	L-Apr.2022	-4.0
Educational books and supplies.....	0.042	10.2	0.007	2.44	S-Feb.2025	9.4
College textbooks ^{5, 13}		10.4		3.00	S-Dec.2024	8.9
Information technology commodities ¹⁰	0.701	-6.8	-0.052	1.58	L-Aug.2024	-6.5
Computers, peripherals, and smart home assistants ⁶	0.264	-5.6	-0.018	1.68	S-Feb.2025	-6.0
Computer software and accessories ⁴	0.028	2.6	0.001	3.81	L-Sep.2022	4.5
Telephone hardware, calculators, and other consumer information items ⁴	0.409	-8.1	-0.035	2.32	L-Feb.2022	-7.7
Smartphones ^{5, 14}		-14.0		2.26	S-Dec.2023	-14.4
Alcoholic beverages.....	0.833	1.8	0.015	0.45	S-Feb.2025	1.7
Alcoholic beverages at home.....	0.448	0.8	0.004	0.50	S-Feb.2025	0.4
Beer, ale, and other malt beverages at home.....	0.153	1.4	0.002	0.61	S-Nov.2021	1.2
Distilled spirits at home.....	0.102	1.9	0.002	0.81	L-Oct.2023	2.1
Whiskey at home ⁵		-0.9		1.40	L-Aug.2024	0.2
Distilled spirits, excluding whiskey, at home ⁵		2.4		1.10	L-Mar.2023	2.5
Wine at home.....	0.193	-0.4	-0.001	0.81	S-Sep.2020	-0.5
Alcoholic beverages away from home.....	0.385	3.0	0.011	0.84	S-Jan.2025	2.1
Beer, ale, and other malt beverages away from home ^{4, 5}		2.6		1.12	S-Sep.2024	1.7
Wine away from home ^{4, 5}		2.2		0.62	L-Jun.2024	2.4
Distilled spirits away from home ^{4, 5}		4.0		1.37	S-Jan.2025	2.4
Other goods ¹⁰	1.291	3.2	0.042	0.44	L-Aug.2024	3.2
Tobacco and smoking products.....	0.483	7.1	0.037	0.64	L-Sep.2024	8.2
Cigarettes ⁴	0.363	8.5	0.035	0.64	L-Sep.2024	8.8
Tobacco products other than cigarettes ⁴	0.115	1.5	0.001	1.69	S-Feb.2025	1.3
Personal care products.....	0.649	0.4	0.003	0.70	L-Jan.2025	0.4
Hair, dental, shaving, and miscellaneous personal care products ⁴	0.291	0.6	0.001	0.94	S-Jan.2025	0.1
Cosmetics, perfume, bath, nail preparations and implements.....	0.349	0.2	0.001	1.19	L-Jan.2025	0.6
Miscellaneous personal goods ⁴	0.159	1.9	0.003	1.47	L-Oct.2023	2.2
Stationery, stationery supplies, gift wrap ⁵		3.9		1.65	L-Feb.2025	4.4
Services less energy services.....	60.640	3.6	2.173	0.17	S-Nov.2021	3.4
Shelter.....	35.426	4.0	1.421	0.19	-	-
Rent of shelter ¹⁵	35.014	4.0	1.411	0.19	-	-
Rent of primary residence.....	7.463	4.0	0.300	0.19	-	-
Lodging away from home ⁴	1.375	-1.4	-0.025	2.02	L-Feb.2025	2.0
Housing at school, excluding board ¹⁵	0.241	3.8	0.009	0.32	S-Feb.2025	3.8
Other lodging away from home including hotels and motels.....	1.134	-2.3	-0.034	2.40	L-Feb.2025	1.7
Owners' equivalent rent of residences ¹⁵	26.176	4.3	1.136	0.18	S-Feb.2022	4.3

See footnotes at end of table.

Table 7. Consumer Price Index for All Urban Consumers (CPI-U): U.S. city average, by expenditure category, April 2025, 12-month analysis table — Continued
 [1982-84=100, unless otherwise noted]

Expenditure category	Relative importance Mar. 2025	Twelve Month				
		Unadjusted percent change Apr. 2024-Apr. 2025	Unadjusted effect on All Items Apr. 2024-Apr. 2025 ¹	Standard error, median price change ²	Largest (L) or Smallest (S) unadjusted change since: ³	
					Date	Percent change
Owners' equivalent rent of primary residence ¹⁵ . . .	24.983	4.3	1.078	0.18	S-Feb.2022	4.3
Tenants' and household insurance ⁴	0.411	2.6	0.011	0.78	L-Feb.2025	3.0
Water and sewer and trash collection services ⁴	1.085	4.9	0.052	0.35	—	—
Water and sewerage maintenance.....	0.740	4.7	0.035	0.37	S-Jan.2025	4.7
Garbage and trash collection ¹²	0.344	5.2	0.017	0.69	S-Feb.2025	5.1
Household operations ⁴						
Domestic services ⁴						
Gardening and lawncare services ⁴						
Moving, storage, freight expense ⁴	0.124	1.0	0.002	4.88	S-Sep.2024	0.0
Repair of household items ⁴						
Medical care services.....	6.736	3.1	0.207	0.63	L-Dec.2024	3.4
Professional services.....	3.666	2.7	0.098	0.85	L-Dec.2024	2.8
Physicians' services.....	1.814	3.1	0.056	1.42	L-Oct.2024	3.1
Dental services.....	0.927	2.2	0.019	1.58	L-Dec.2024	3.0
Eyeglasses and eye care ⁸	0.333	2.9	0.009	0.96	S-Sep.2024	2.2
Services by other medical professionals ⁸	0.592	2.3	0.013	0.73	L-Nov.2022	3.7
Hospital and related services.....	2.276	3.8	0.086	0.73	S-Feb.2025	3.8
Hospital services ¹⁶	1.949	3.6	0.071	0.85	S-Feb.2025	3.6
Inpatient hospital services ^{5, 16}		4.3		1.19	S-Feb.2025	3.3
Outpatient hospital services ^{5, 8}		2.9		1.87	L-Feb.2025	3.2
Nursing homes and adult day services ¹⁶	0.166	4.6	0.008	0.75	S-Feb.2025	4.1
Care of invalids and elderly at home ⁷						
Health insurance ⁷	0.793	3.3	0.023	0.62	L-Feb.2025	3.9
Transportation services.....	6.270	2.5	0.161	0.67	S-Mar.2021	-1.6
Leased cars and trucks ¹³	0.388		-0.014	1.84	—	—
Car and truck rental ⁴	0.127	-2.1	-0.003	1.58	L-Feb.2023	-0.8
Motor vehicle maintenance and repair.....	1.022	5.6	0.063	1.82	L-Feb.2025	5.8
Motor vehicle body work.....						
Motor vehicle maintenance and servicing.....	0.506	4.5	0.025	0.76	L-Feb.2025	4.7
Motor vehicle repair ⁴	0.402	7.6	0.034	3.85	L-Feb.2025	7.9
Motor vehicle insurance.....	2.829	6.4	0.181	1.06	S-Jun.2022	6.0
Motor vehicle fees ⁴	0.499	1.2	0.006	0.55	S-May 2022	1.0
State motor vehicle registration and license fees ⁴	0.281	2.0	0.006	0.28	—	—
Parking and other fees ⁴	0.204	0.4	0.000	1.22	S-Dec.2024	0.3
Parking fees and tolls ^{4, 5}		2.8		1.12	S-Jul.2023	2.8
Public transportation.....	1.405	-5.6	-0.073	0.92	S-Mar.2024	-5.6
Airline fares.....	0.872	-7.9	-0.070	1.21	S-Dec.2023	-9.4
Other intercity transportation.....	0.209	-1.4	-0.006	2.10	S-Nov.2024	-3.5
Ship fare ^{4, 5}		-3.7		2.52	S-Sep.2022	-3.7
Intracity transportation.....	0.320	1.4	0.004	1.02	S-Dec.2024	-0.4
Intracity mass transit ^{5, 10}		2.2		2.29	—	—
Recreation services ¹⁰	3.496	3.6	0.122	0.52	S-Dec.2024	2.7
Video and audio services ¹⁰	0.826	0.6	0.003	0.72	S-Jan.2011	-0.2
Cable, satellite, and live streaming television service ¹²	0.665	0.3	-0.001	0.50	S-Jan.2011	0.0
Purchase, subscription, and rental of video ⁴	0.161	2.4	0.004	3.19	S-Apr.2022	1.3
Video discs and other media ^{4, 5}		1.0		3.73	S-Apr.2022	-0.5
Subscription and rental of video and video games ^{4, 5}		9.0		2.16	S-Feb.2025	7.6
Pet services including veterinary ⁴	0.536	4.6	0.023	1.07	S-Nov.2021	4.2
Pet services ^{4, 5}		5.4		2.58	L-Jan.2025	5.5
Veterinarian services ^{4, 5}		5.3		1.88	S-Feb.2022	5.2
Photographers and photo processing ⁴						

See footnotes at end of table.

Table 7. Consumer Price Index for All Urban Consumers (CPI-U): U.S. city average, by expenditure category, April 2025, 12-month analysis table — Continued
 [1982-84=100, unless otherwise noted]

Expenditure category	Relative importance Mar. 2025	Twelve Month				
		Unadjusted percent change Apr. 2024-Apr. 2025	Unadjusted effect on All Items Apr. 2024-Apr. 2025 ¹	Standard error, median price change ²	Largest (L) or Smallest (S) unadjusted change since: ³	
					Date	Percent change
Other recreation services ⁴	2.078	5.1	0.098	0.62	S-Feb.2025	4.3
Club membership for shopping clubs, fraternal, or other organizations, or participant sports fees ⁴	0.818	4.9	0.036	0.50	—	—
Admissions.....	0.760	5.9	0.041	1.52	S-Feb.2025	3.4
Admission to movies, theaters, and concerts ^{4, 5}		3.4		1.66	L-Oct.2024	3.4
Admission to sporting events ^{4, 5}		9.3		6.37	S-Jan.2025	6.5
Fees for lessons or instructions ⁸	0.167	2.5	0.006	1.18	S-Dec.2024	2.5
Education and communication services ¹⁰	4.949	1.2	0.057	0.24	S-Jul.2021	1.2
Tuition, other school fees, and childcare.....	2.517	3.6	0.085	0.43	S-Feb.2025	3.5
College tuition and fees.....	1.303	2.3	0.029	0.68	—	—
Elementary and high school tuition and fees.....	0.385	5.2	0.015	0.37	S-Feb.2025	4.7
Day care and preschool ¹¹	0.724	5.4	0.038	0.51	S-Feb.2025	5.4
Technical and business school tuition and fees ⁴	0.039	1.0	0.000	0.92	S-Feb.2025	1.0
Postage and delivery services ⁴	0.053	2.9	0.002	0.47	—	—
Postage.....	0.051	3.2	0.002	0.54	—	—
Delivery services ⁴	0.002	6.2	0.000	0.88	—	—
Telephone services ⁴	1.434	0.0	0.000	0.16	S-Jan.2025	0.0
Wireless telephone services ⁴	1.262	-0.3	-0.004	0.20	—	—
Residential telephone services ¹⁰	0.172	2.2	0.004	0.63	S-Dec.2024	2.1
Internet services and electronic information providers ⁴	0.937	-2.9	-0.029	0.54	S-Apr.2018	-3.9
Other personal services ¹⁰	1.648	3.9	0.061	0.51	S-Feb.2025	3.8
Personal care services.....	0.657	3.6	0.023	0.73	S-May 2020	3.5
Haircuts and other personal care services ⁴	0.657	3.6	0.023	0.73	S-May 2020	3.5
Miscellaneous personal services.....	0.990	4.0	0.038	0.57	S-Feb.2025	3.2
Legal services ⁹						
Funeral expenses ⁹	0.141	2.1	0.003	0.81	S-Feb.2022	2.0
Laundry and dry cleaning services ⁴	0.163	3.3	0.005	0.82	S-May 2021	2.7
Apparel services other than laundry and dry cleaning ⁴	0.027	1.0	0.000	2.34	S-Sep.2021	0.8
Financial services ⁹	0.250	2.4	0.007	1.41	S-Feb.2025	-2.6
Checking account and other bank services ^{4, 5}		2.9		3.33	—	—
Tax return preparation and other accounting fees ^{4, 5}		3.4		2.69	S-Feb.2025	-4.4
Special aggregate indexes						
All items less food.....	86.319	2.2	1.939	0.13	S-Feb.2021	1.4
All items less shelter.....	64.574	1.4	0.890	0.14	S-Oct.2024	1.3
All items less food and shelter.....	50.894	1.0	0.518	0.17	S-Sep.2024	0.8
All items less food, shelter, and energy.....	44.582	1.8	0.791	0.19	—	—
All items less food, shelter, energy, and used cars and trucks.....	42.201	1.8	0.755	0.19	—	—
All items less medical care.....	91.755	2.3	2.090	0.10	S-Feb.2021	1.6
All items less energy.....	93.688	2.8	2.584	0.12	—	—
Commodities.....	36.199	-0.2	-0.051	0.12	S-Nov.2024	-0.2
Commodities less food, energy, and used cars and trucks.....	16.987	0.0	0.004	0.20	L-Jan.2024	0.1
Commodities less food.....	22.518	-2.0	-0.423	0.16	S-Oct.2024	-2.7
Commodities less food and beverages.....	21.685	-2.1	-0.438	0.16	S-Oct.2024	-2.9
Services.....	63.801	3.7	2.362	0.17	—	—
Services less rent of shelter ¹⁵	28.787	3.3	0.951	0.26	—	—
Services less medical care services.....	57.066	3.8	2.155	0.16	—	—
Durables.....	10.891	-0.4	-0.026	0.21	L-May 2023	0.0

See footnotes at end of table.

Table 7. Consumer Price Index for All Urban Consumers (CPI-U): U.S. city average, by expenditure category, April 2025, 12-month analysis table — Continued
 [1982-84=100, unless otherwise noted]

Expenditure category	Relative importance Mar. 2025	Twelve Month				
		Unadjusted percent change Apr. 2024-Apr. 2025	Unadjusted effect on All Items Apr. 2024-Apr. 2025 ¹	Standard error, median price change ²	Largest (L) or Smallest (S) unadjusted change since: ³	
					Date	Percent change
Nondurables.....	25.308	-0.1	-0.025	0.14	S-Oct.2024	-0.5
Nondurables less food.....	11.627	-3.1	-0.397	0.24	S-Oct.2024	-3.3
Nondurables less food and beverages.....	10.794	-3.5	-0.412	0.25	S-Oct.2024	-3.6
Nondurables less food, beverages, and apparel.....	8.218	-4.3	-0.393	0.26	S-Oct.2024	-4.8
Nondurables less food and apparel.....	9.050	-3.8	-0.379	0.25	S-Oct.2024	-4.2
Housing.....	44.217	4.0	1.751	0.18	L-Dec.2024	4.1
Education and communication ⁴	5.692	0.2	0.012	0.26	S-Mar.2024	0.2
Education ⁴	2.559	3.8	0.092	0.41	S-Feb.2025	3.7
Communication ⁴	3.133	-2.3	-0.080	0.43	S-Feb.2018	-5.0
Information and information processing ⁴	3.080	-2.5	-0.082	0.44	S-Feb.2018	-5.2
Information technology, hardware and services ¹⁷	1.646	-4.6	-0.082	0.81	S-Dec.2022	-4.6
Recreation ⁴	5.313	1.6	0.085	0.36	S-Jan.2025	1.6
Video and audio ⁴	1.073	0.1	-0.001	0.64	S-Jul.2019	0.0
Pets, pet products and services ⁴	1.160	1.9	0.022	0.90	L-Feb.2025	2.4
Photography ⁴	0.075	-1.6	-0.001	1.86	L-Feb.2025	-0.9
Food and beverages.....	14.513	2.7	0.387	0.13	S-Feb.2025	2.6
Domestically produced farm food.....	6.796	1.9	0.130	0.19	S-Dec.2024	1.8
Other services.....	10.092	2.4	0.241	0.24	S-Dec.2024	2.4
Apparel less footwear.....	1.993	-0.5	-0.012	0.85	S-Mar.2021	-3.2
Fuels and utilities.....	4.388	5.4	0.230	0.66	L-Mar.2023	7.3
Household energy.....	3.303	5.5	0.178	0.84	L-Mar.2023	7.8
Medical care.....	8.245	2.7	0.221	0.60	L-Feb.2025	2.9
Transportation.....	16.503	-1.5	-0.231	0.31	S-Jul.2023	-3.0
Private transportation.....	15.098	-1.1	-0.158	0.32	S-Sep.2024	-1.1
New and used motor vehicles ⁴	7.381	0.4	0.037	0.19	L-Jan.2025	0.7
Utilities and public transportation.....	7.750	2.2	0.168	0.42	L-Jan.2025	2.5
Household furnishings and operations.....	4.403	2.3	0.100	0.50	L-Jul.2023	2.9
Other goods and services.....	2.939	3.6	0.104	0.39	S-Feb.2025	3.3
Personal care.....	2.455	2.8	0.067	0.44	S-Feb.2025	2.5

¹ The 'effect' of an item category is a measure of that item's contribution to the All items price change. For example, if the Food index had an effect of 0.40, and the All items index rose 1.2 percent, then the increase in food prices contributed 0.40 / 1.2, or 33.3 percent, to that All items increase. Said another way, had food prices been unchanged for that year the change in the All items index would have been 1.2 percent minus 0.40, or 0.8 percent. Effects can be negative as well. For example, if the effect of food was a negative 0.1, and the All items index rose 0.5 percent, the All items index actually would have been 0.1 percent higher (or 0.6 percent) had food prices been unchanged. Since food prices fell while prices overall were rising, the contribution of food to the All items price change was negative (in this case, -0.1 / 0.5, or minus 20 percent).

² A statistic's margin of error is often expressed as its point estimate plus or minus two standard errors. For example, if a CPI category rose 2.6 percent, and its standard error was 0.25 percent, the margin of error on this item's 12-month percent change would be 2.6 percent, plus or minus 0.5 percent.

³ If the current 12-month percent change is greater than the previous published 12-month percent change, then this column identifies the closest prior month with a 12-month percent change as (L)arge as or (L)arger than the current 12-month change. If the current 12-month percent change is smaller than the previous published 12-month percent change, the most recent month with a change as (S)mall or (S)maller than the current month change is identified. If the current and previous published 12-month percent changes are equal, a dash will appear. Standard numerical comparison is used. For example, 2.0% is greater than 0.6%, -4.4% is less than -2.0%, and -2.0% is less than 0.0%. Note that a (L)arger change can be a smaller decline, for example, a -0.2% change is larger than a -0.4% change, but still represents a decline in the price index. Likewise, (S)maller changes can be increases, for example, a 0.6% change is smaller than 0.8%, but still represents an increase in the price index. In this context, a -0.2% change is considered to be smaller than a 0.0% change.

⁴ Indexes on a December 1997=100 base.

⁵ Special indexes based on a substantially smaller sample. These series do not contribute to the all items index aggregation and therefore do not have a relative importance or effect.

⁶ Indexes on a December 2007=100 base.

⁷ Indexes on a December 2005=100 base.

⁸ Indexes on a December 1986=100 base.

⁹ Indexes on a December 1993=100 base.

¹⁰ Indexes on a December 2009=100 base.

¹¹ Indexes on a December 1990=100 base.

¹² Indexes on a December 1983=100 base.

¹³ Indexes on a December 2001=100 base.

¹⁴ Indexes on a December 2019=100 base.

¹⁵ Indexes on a December 1982=100 base.

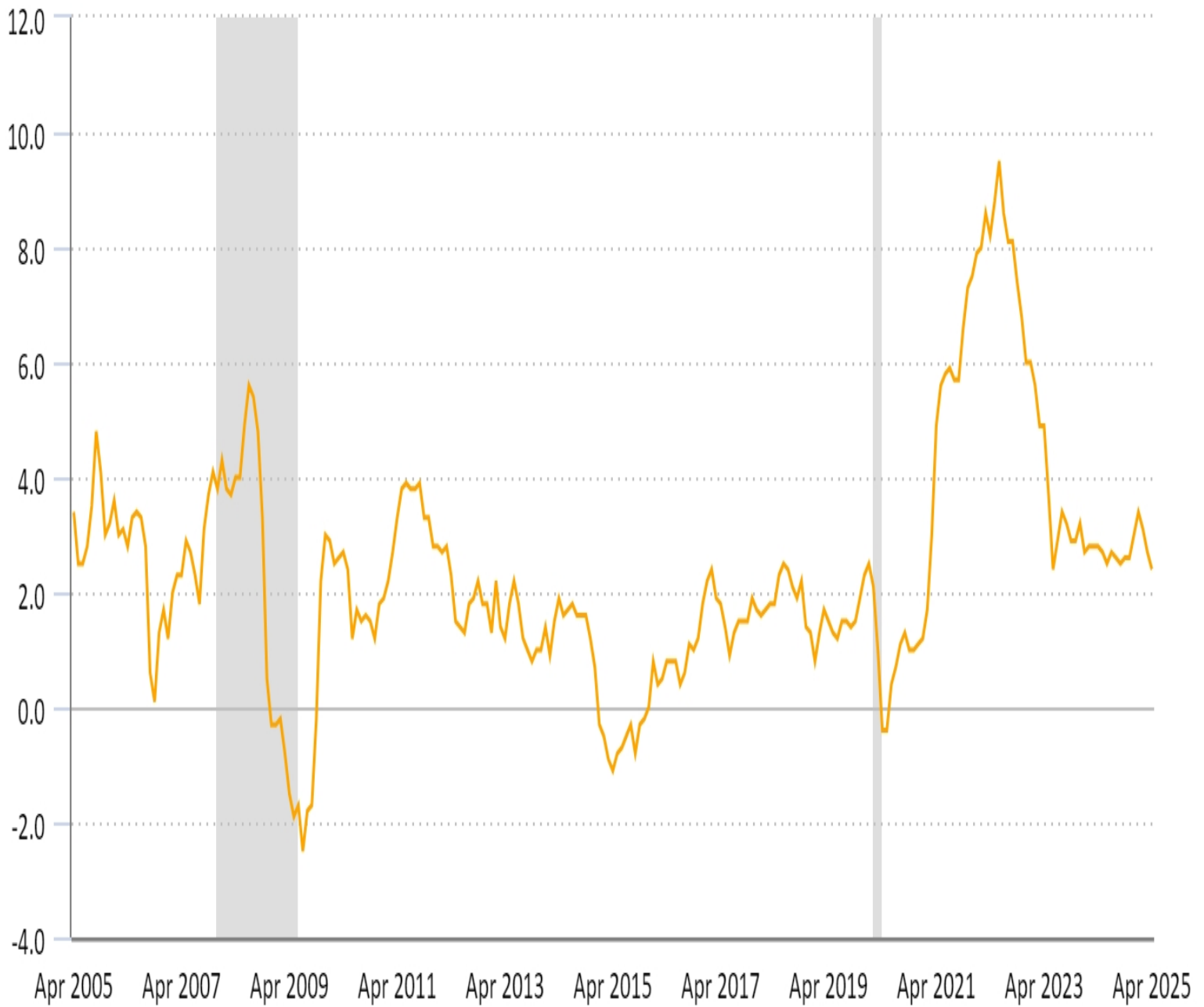
¹⁶ Indexes on a December 1996=100 base.

¹⁷ Indexes on a December 1988=100 base.

12-month percentage change, Consumer Price Index, by region and division, all items, not seasonally adjusted

- South
- West
- Midwest
- Northeast
- - - South Atlantic
- Mountain
- - - East North Central
- New England
- - - East South Central
- - - Pacific
- · · West North Central
- · · Middle Atlantic
- · · West South Central

Percent



Source: U.S. Bureau of Labor Statistics.

